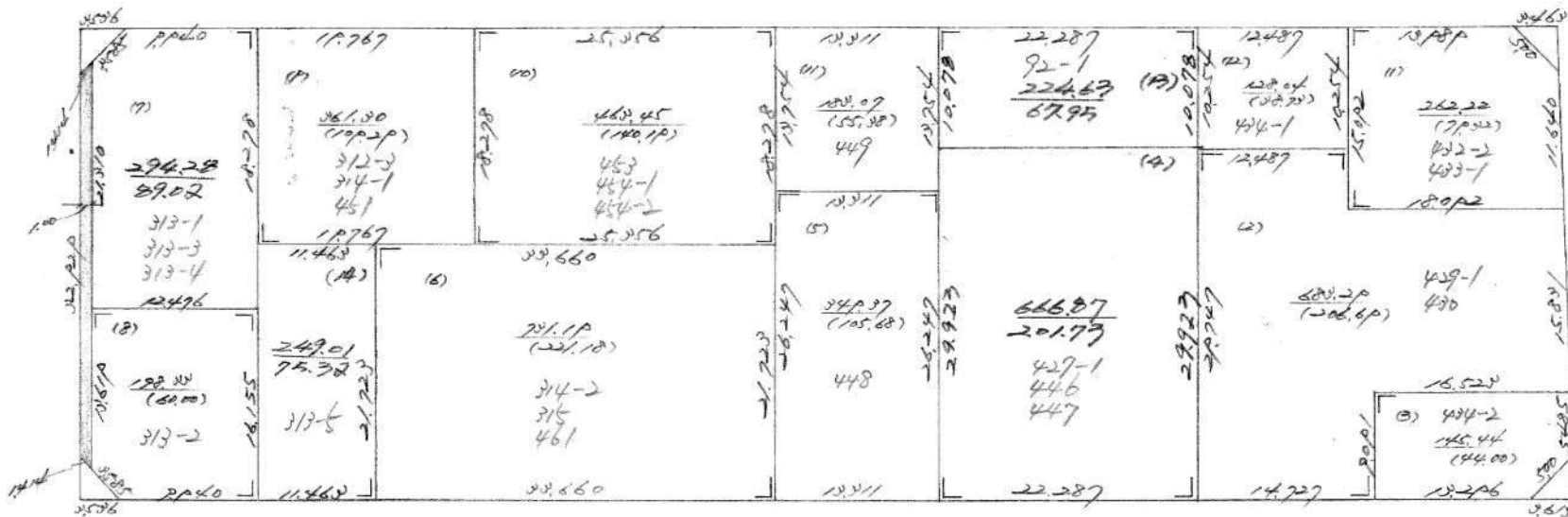


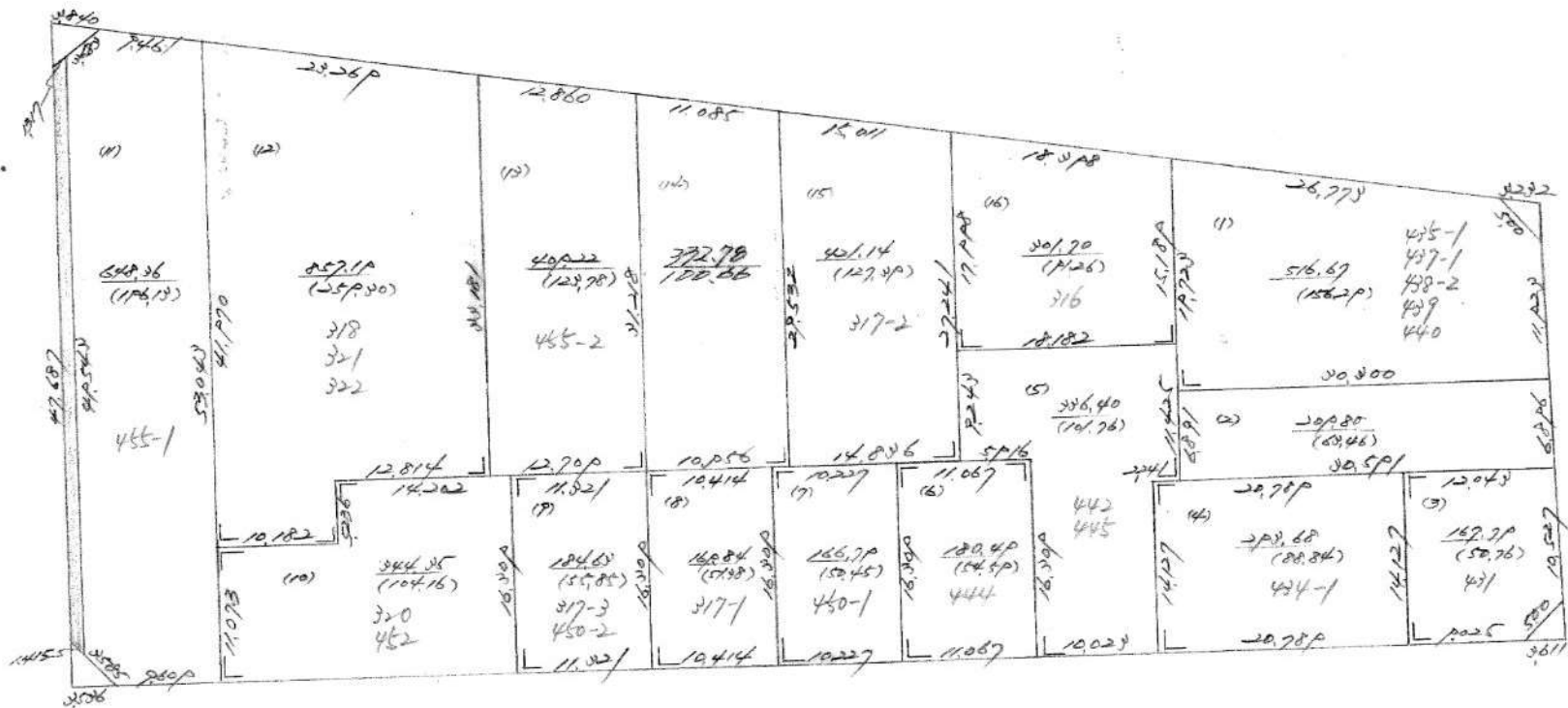
№ 86

北緯路=JA1



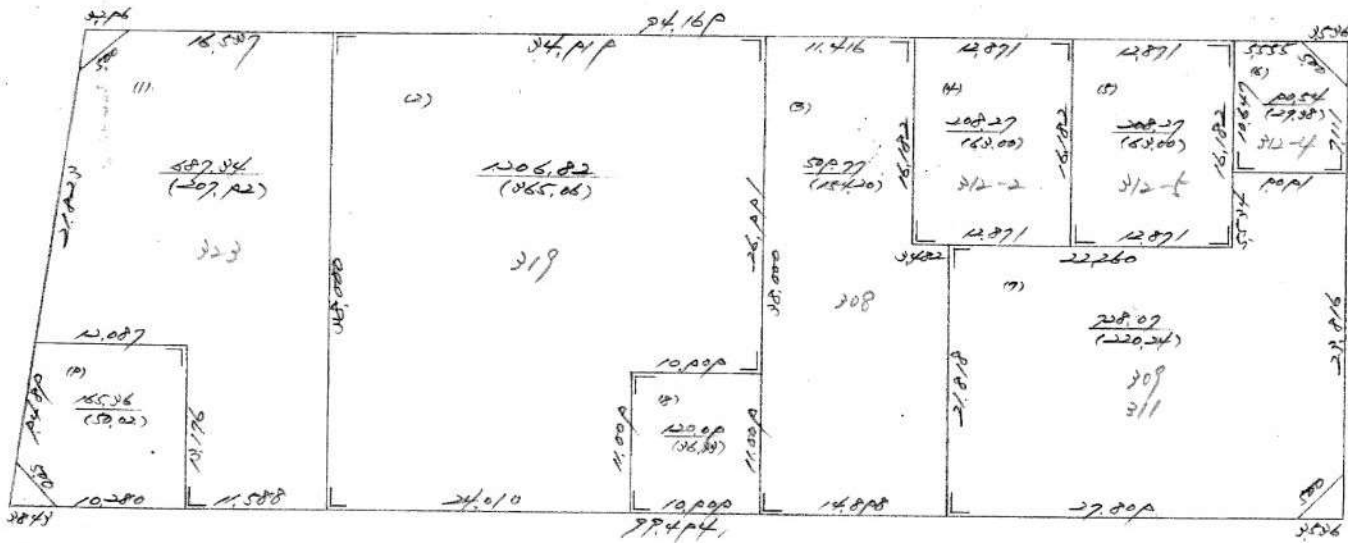
4,440.51
(14,444.48)

№ 85 比较图三目二



5,540,000
(1676,06)

№ 97 23.11.2012

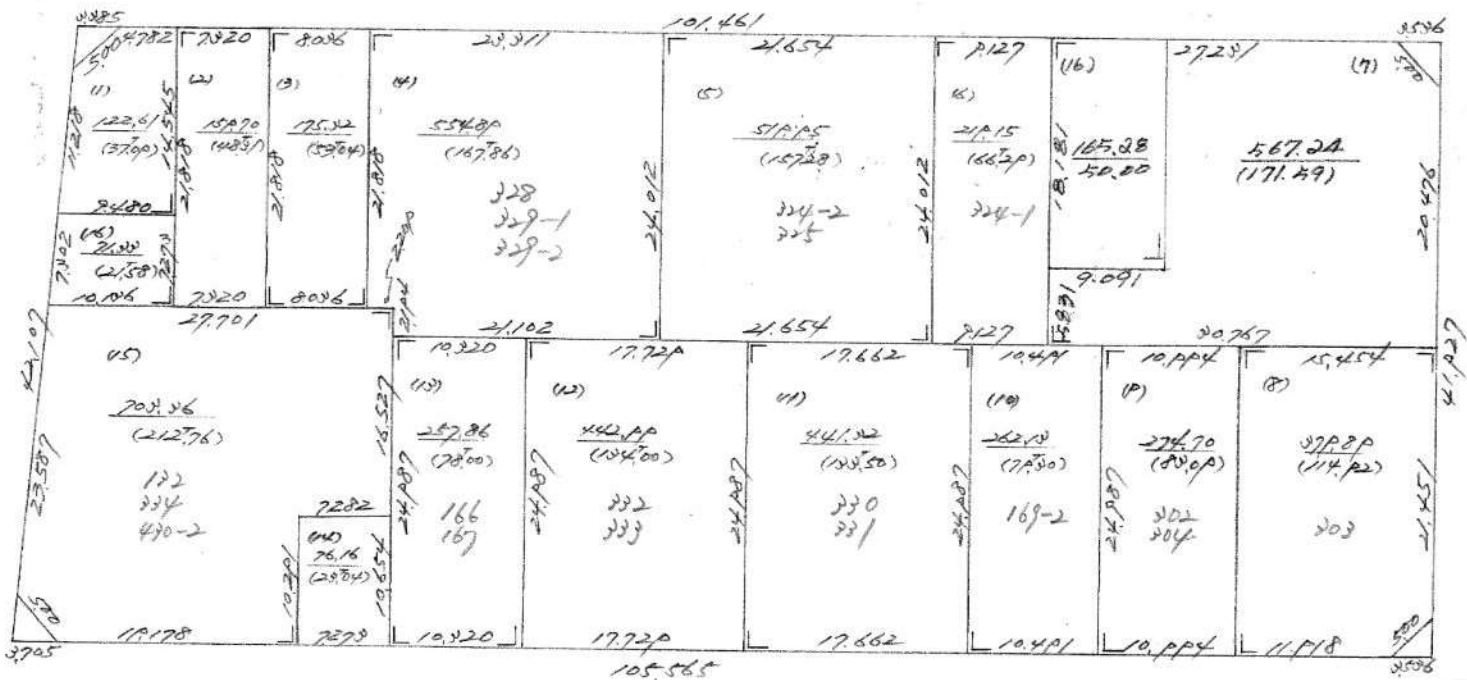


208.07 / 120.00



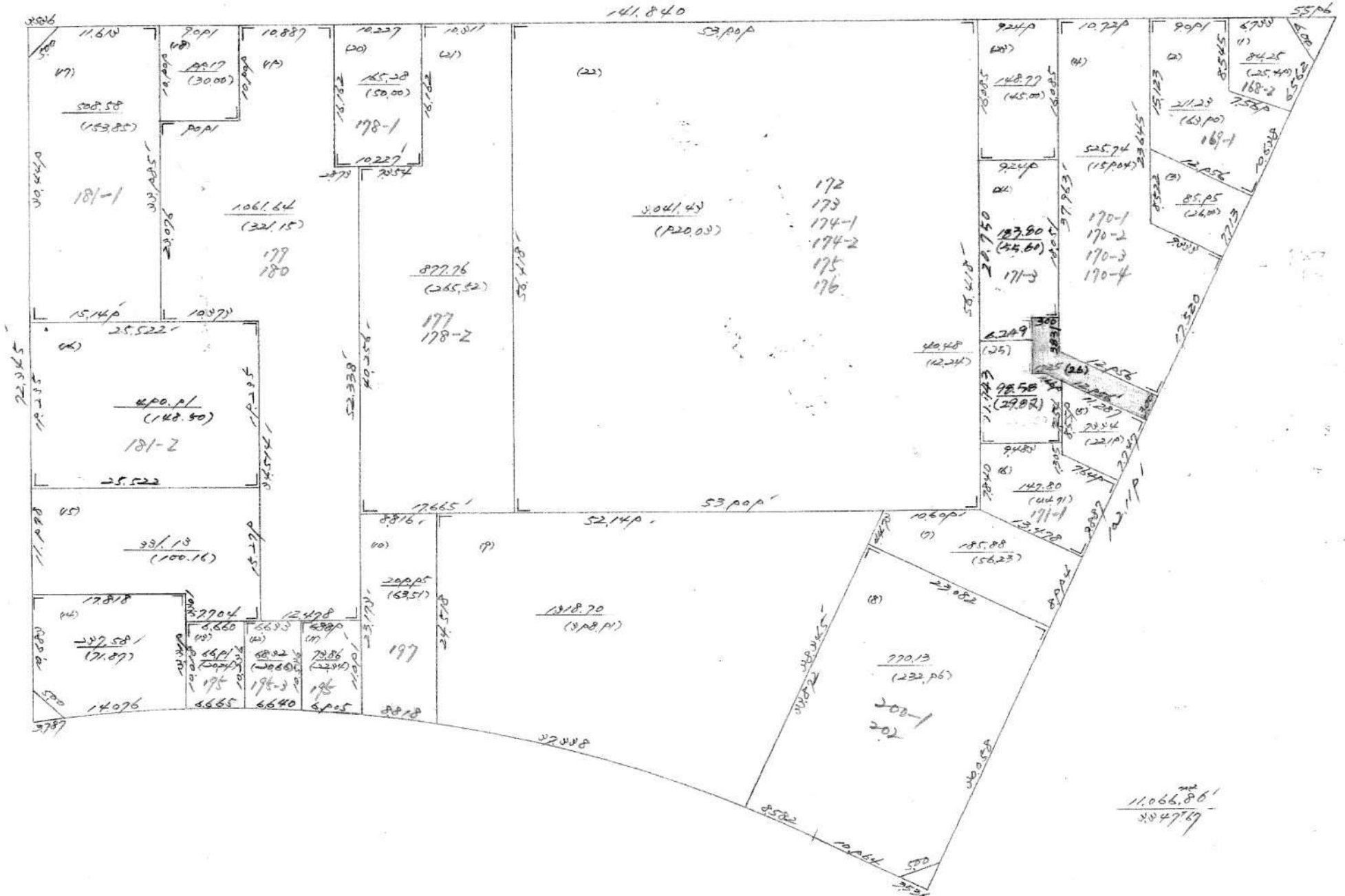
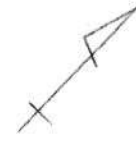
№ 98

北城后二道子

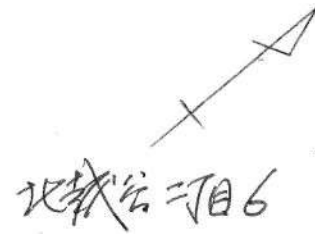


5.344.00
(128786)

No 104 城市二区



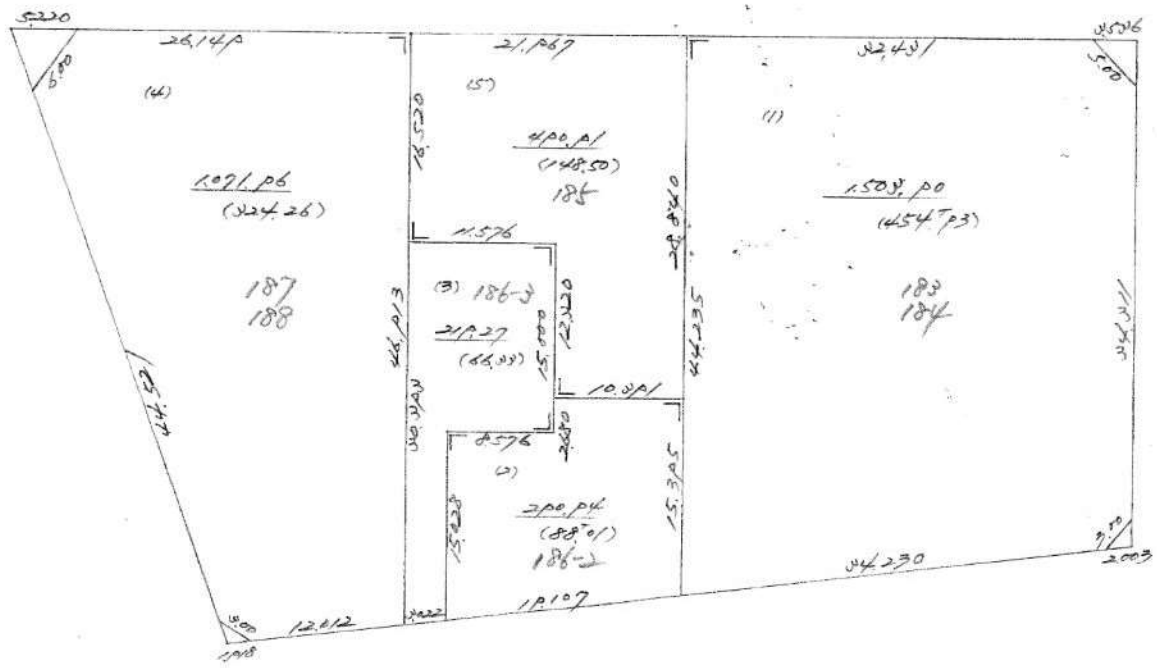
№ 106



2,555,14
772,70

№ 105

水坑岩 = 丁目7

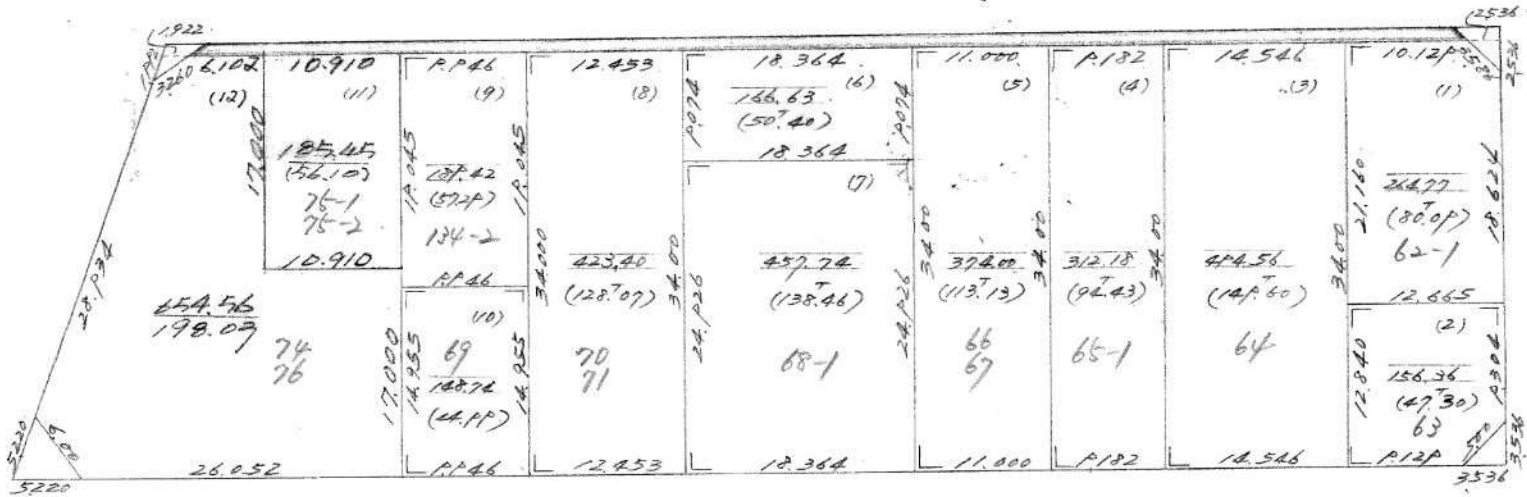


2576.98
(1082.03)



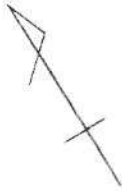
№ 107

比数后=108



Σ 3827.845 * 101.420
 (115289)

№ 108 比数号 = 丁目



11.511 (10)	19.178 (9)	10.00 (8)	10.00 (7)	10.017 (6)	10.00 (5)	10.00 (4)	10.00 (3)	10.003 (2)	14.039 (1)
231.40 (70.00)	331.69 (100.37)	176.01 (57.56)	207.85 (62.87)	234.09 (71.08)	272.50 (64.28)	208.97 (63.21)	205.44 (62.14)	206.08 (62.33)	367.16 (111.06)
72 18.442	73 19.389	53.01 47.05	10.05 9.01	34.22 70.19	10.007 10.007	10.007 10.007	10.007 10.014	17.514	
11.511	19.178	10.00	10.00	10.017	10.00	10.00	10.00	10.003	14.039

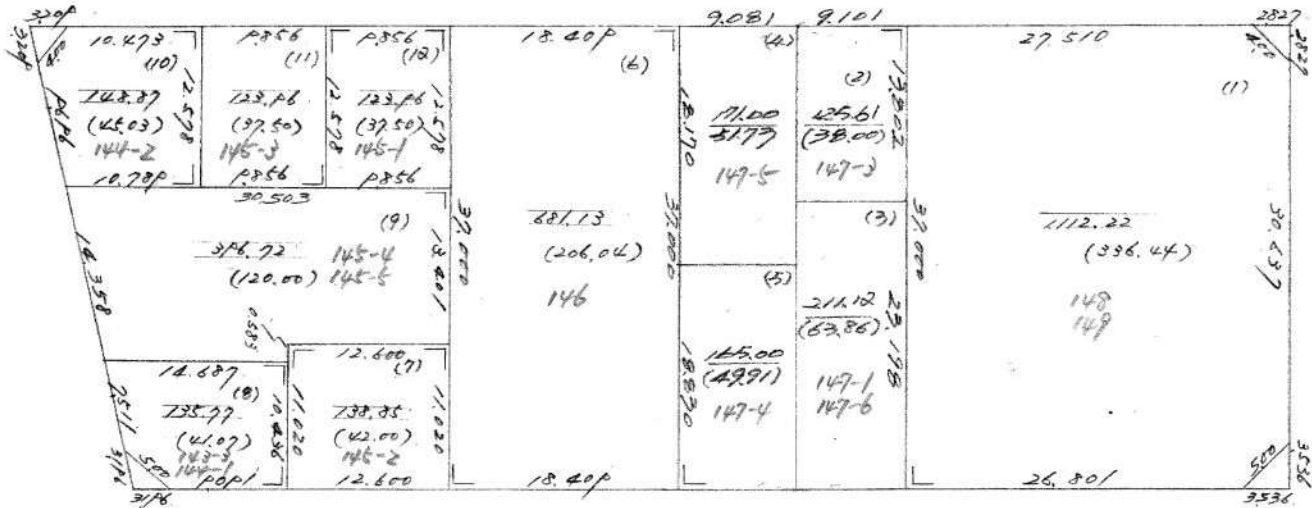
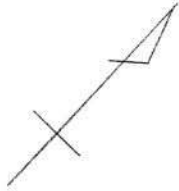
$\frac{78 \quad 2409.022}{(726.86)}$

No 54 北城谷 = 丁目10



3750.17^{m²}
 (1134.42)

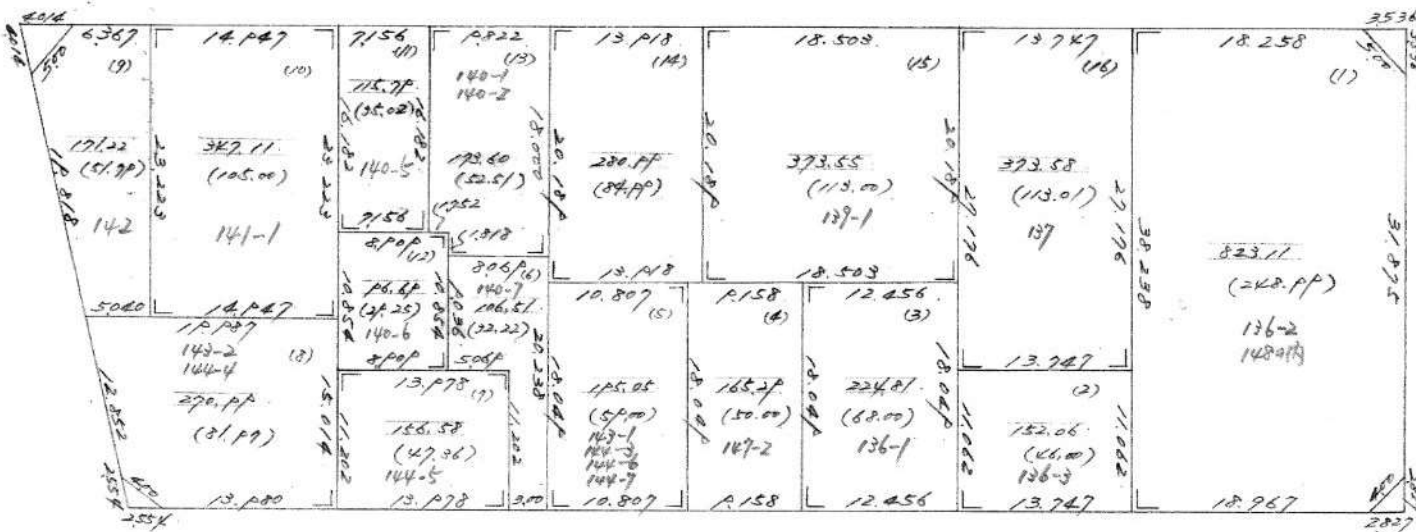
№ 55 改定地目表



7a. 5534.243
 (1069.08)

№ 56

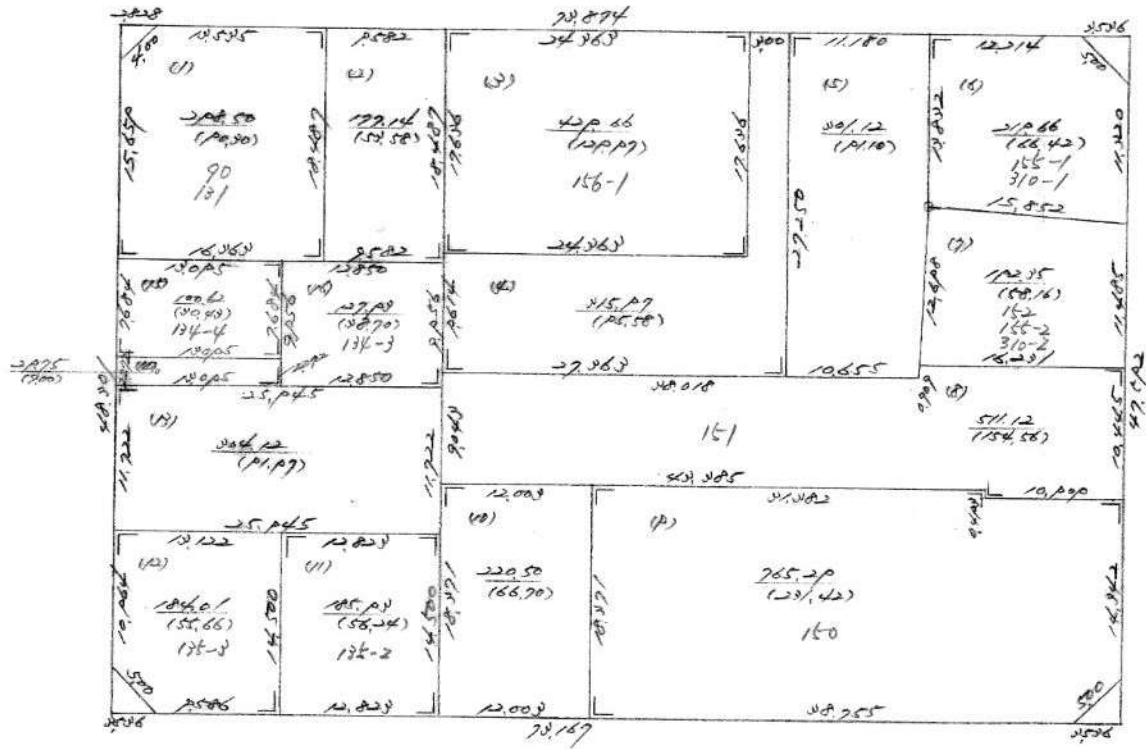
地段号 = 12



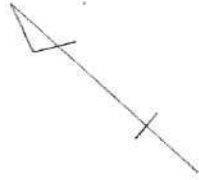
Tr. 4027.013.
(1218:11)



№ 67 ~~13~~ 13

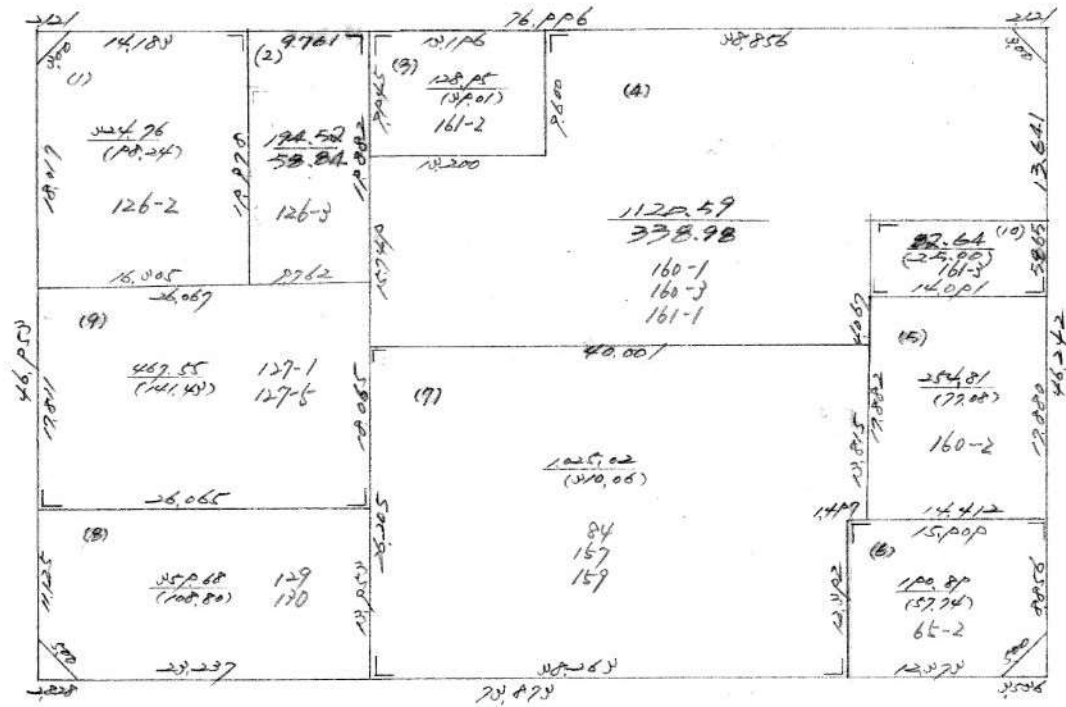


4060.75 / 1311.79



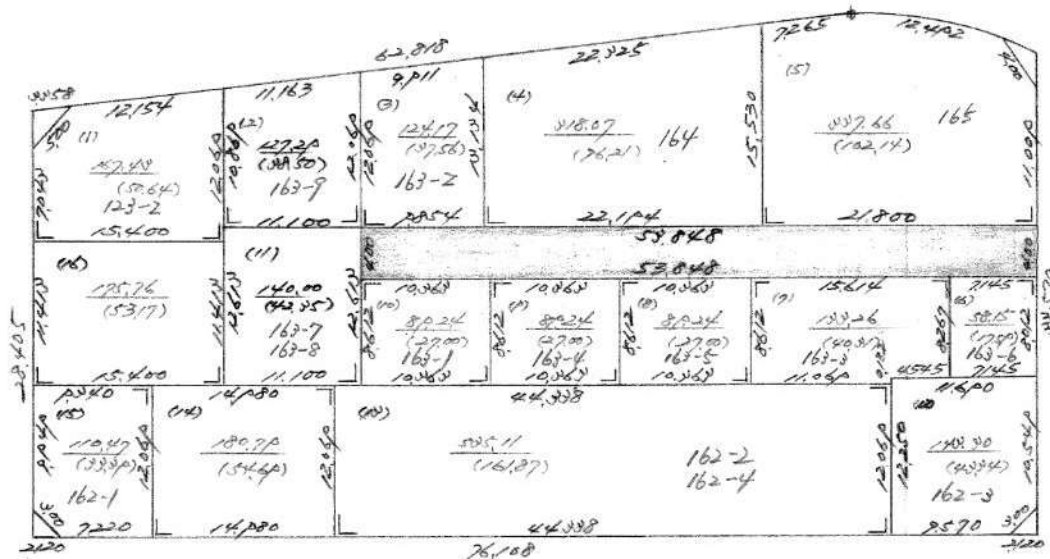
№ 68

№ 1014



414947
(125,78)

№ 69 地積算 = JAIS



281,260
(282,760)



№ 70

地籍图 1/16



$\frac{5415.17}{(1608.88)}$

NO 82

北城后=丁月7



To. 4123.424.
 (1242731)



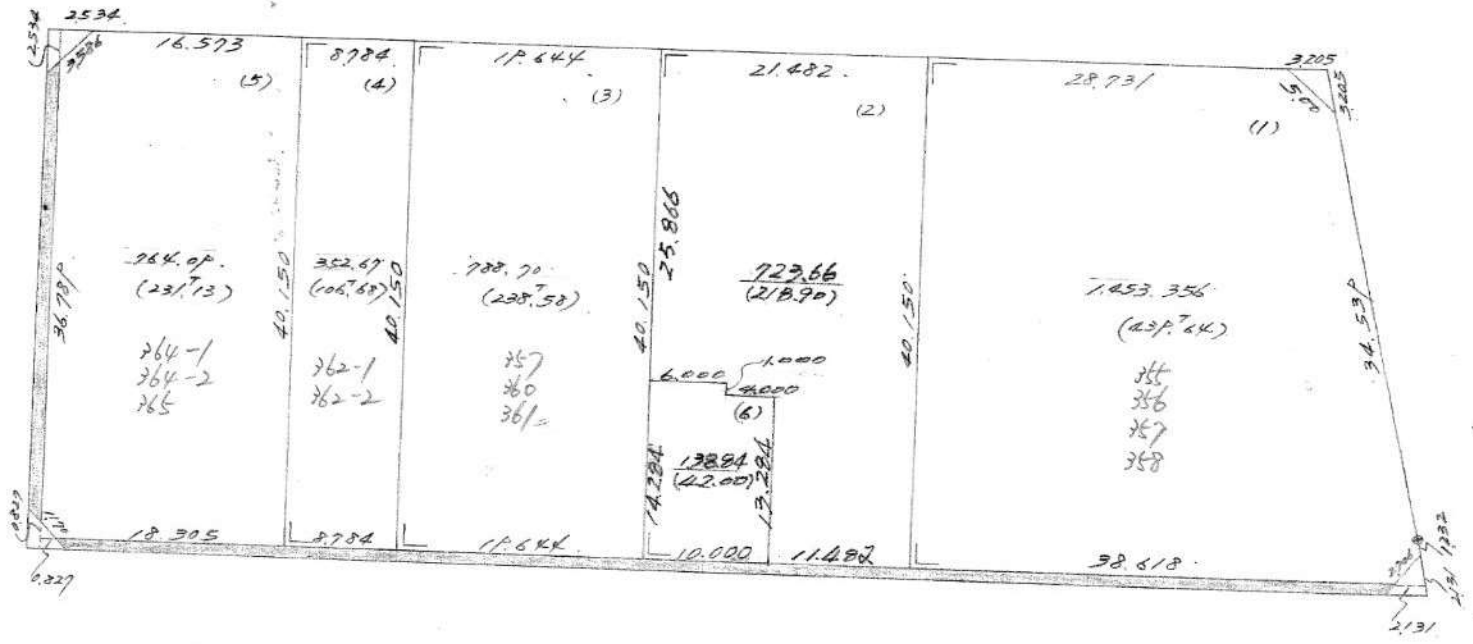
№ 84

此表合三頁 18



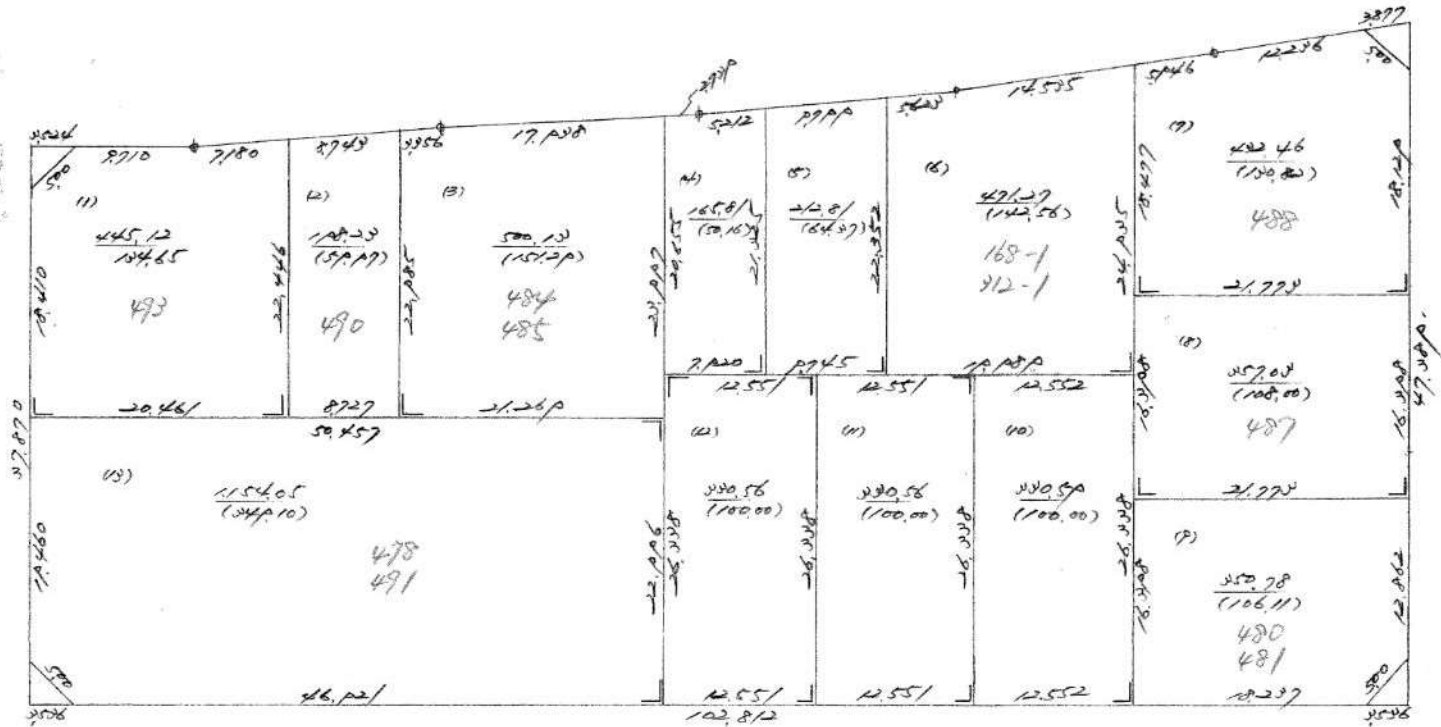
72. 5860.705 * 45.157
(1772.183)

No 83 北城台 = 田 19



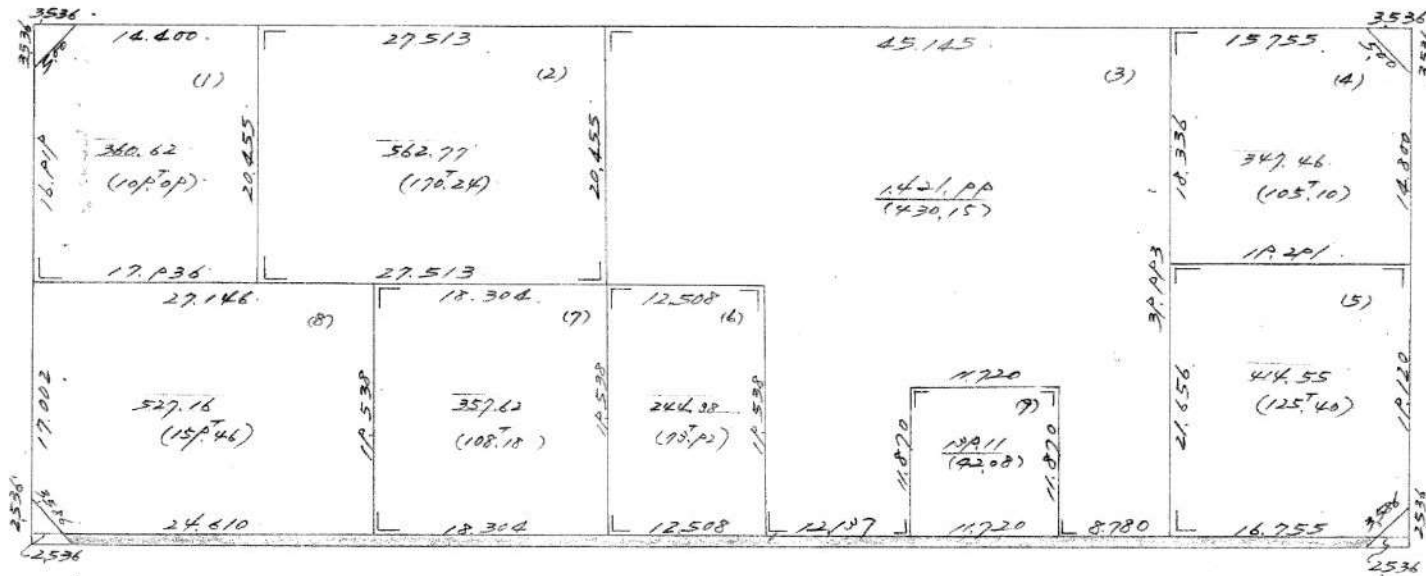
Total Area: 122,335 (127,693) * 141,700

No 78 比数台 = JA20



$\frac{5279.46}{1597.03}$

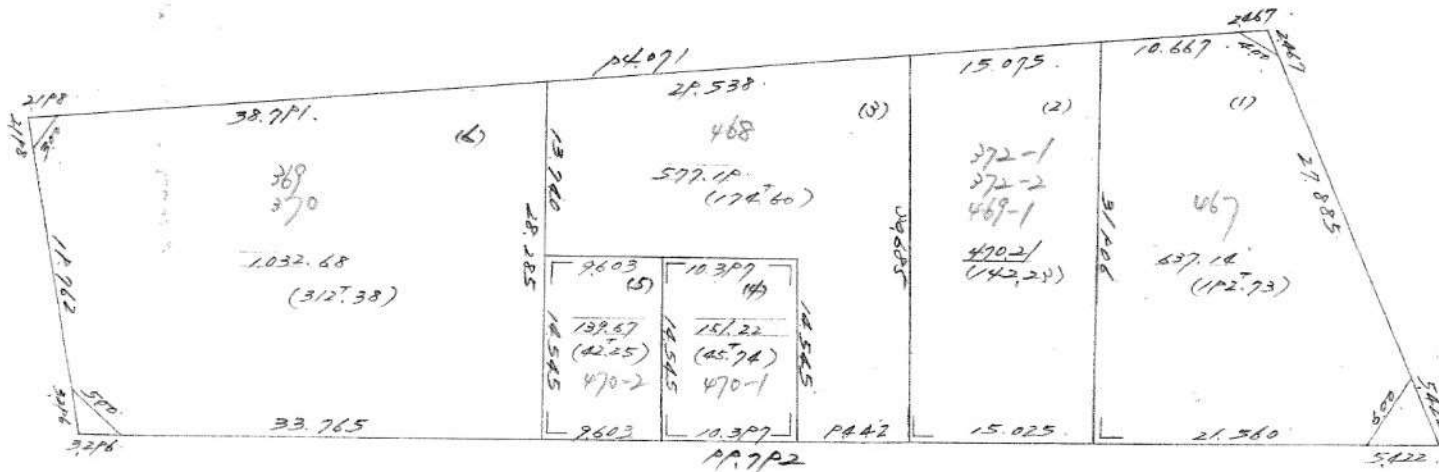
NO 79 北城台 = 田 21



Ta. 4375.674 K. 103.801
 (1323.62)

№ 80

改訂管区A22

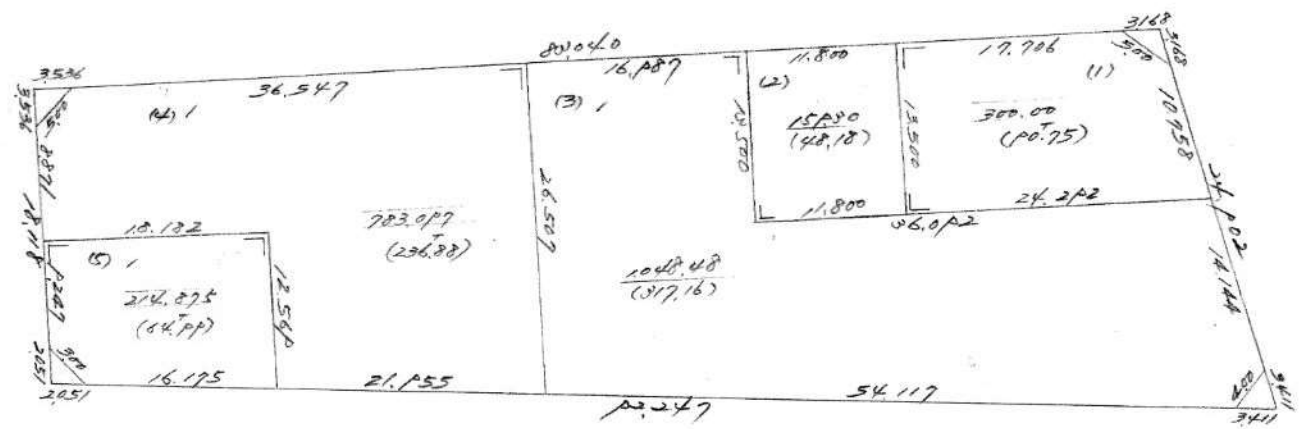


37.50
123.17

Ta. 3000.147
(908.93)

№ 81

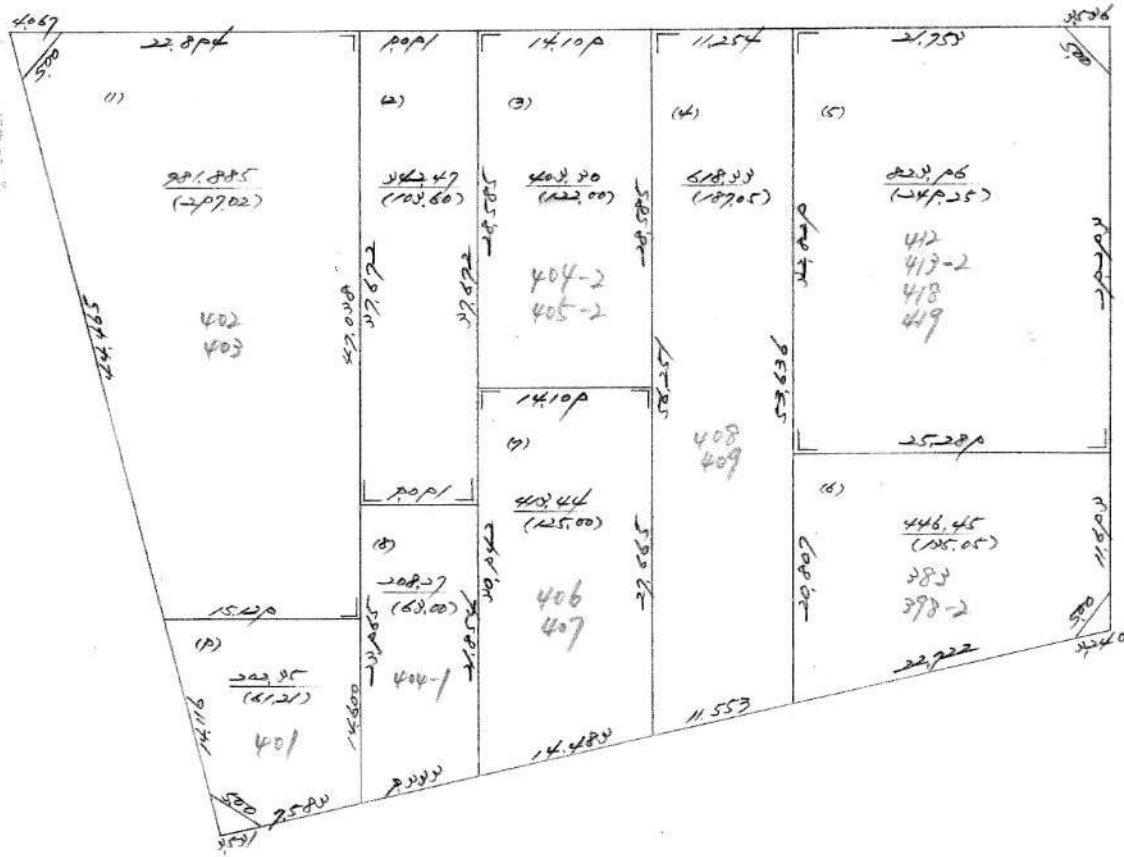
北城管(目2)



72. 2505.768
(757.97)

No. 72

現款¹²信 = 月24



$\frac{4,440,48}{(1,343,78)}$

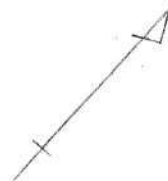
NO 71 改裝台=相寸



To 348A.130
(1055.45)

№ 66

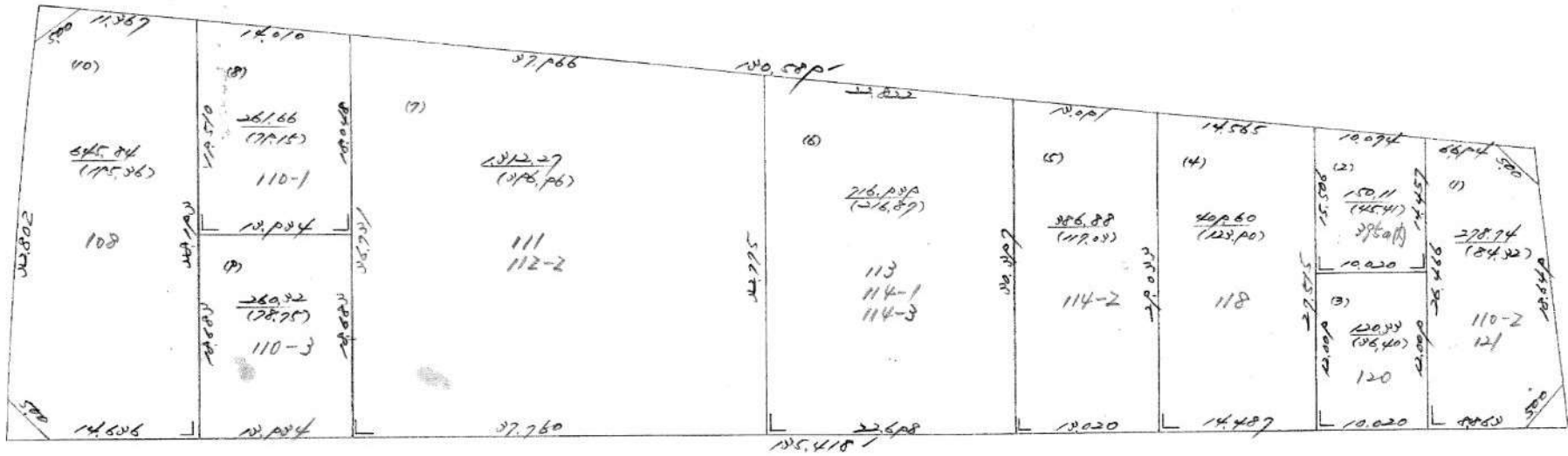
北緯 經 = 月 26



<p>1080.19</p> <p>374.79 (188.51)</p> <p>17620 16,180</p>	<p>109</p> <p>576.54 (158.25)</p> <p>16200</p>	<p>112-1</p> <p>604.21 (219.00)</p> <p>15525</p>	<p>126-1</p> <p>522.38 (185.00)</p> <p>17669</p>	<p>138-3</p> <p>824.55 (270.00)</p> <p>16071</p>	<p>122-2</p> <p>257.35 (77.65)</p> <p>7771</p>
<p>134-1</p> <p>371.91 (142.80)</p> <p>16200</p>	<p>133-2 133-3</p> <p>802.29 (244.81)</p> <p>15525</p>	<p>127-2</p> <p>405.64 (122.70)</p> <p>17669</p>	<p>124</p> <p>828.11 (250.80)</p> <p>16071</p>	<p>123-1</p> <p>220.33 (59.87)</p> <p>7771</p>	

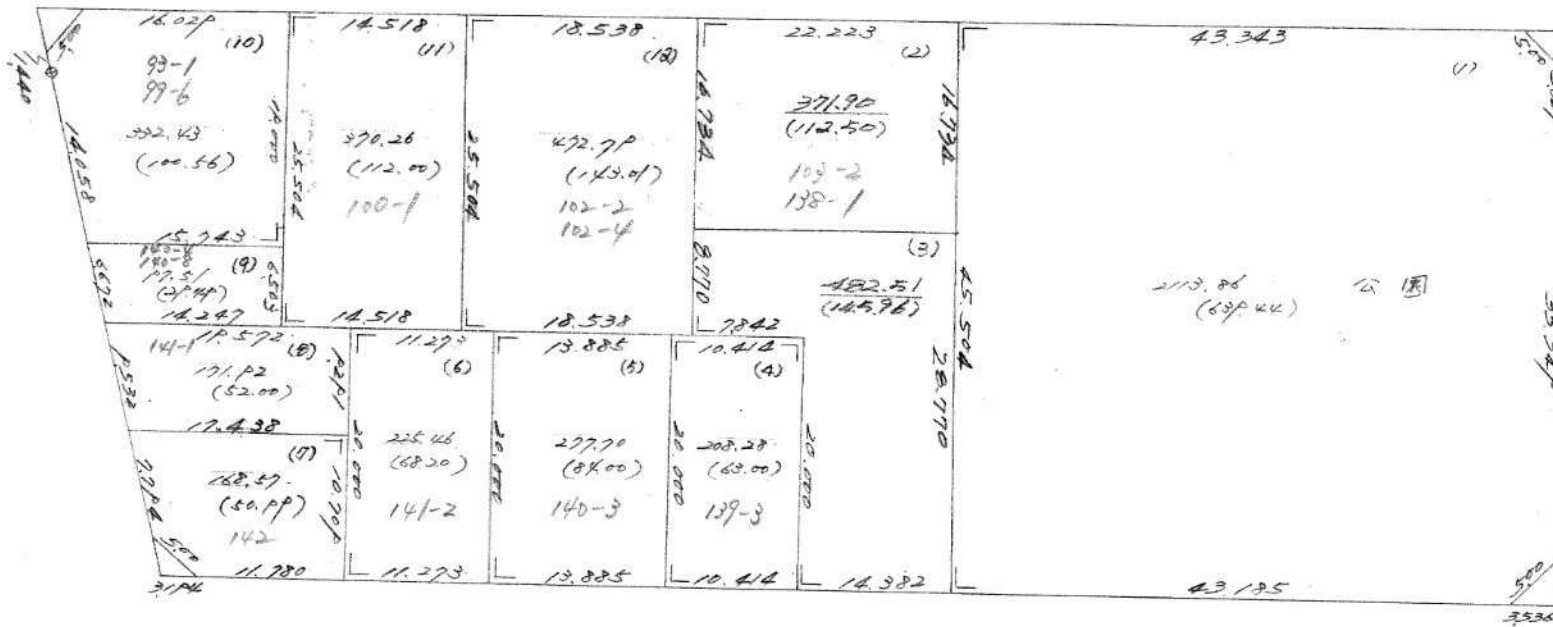
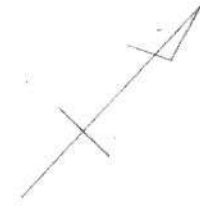
16 34.78
(2008.78)

No. 65 北城管 [A27]



4542.78
(137475)

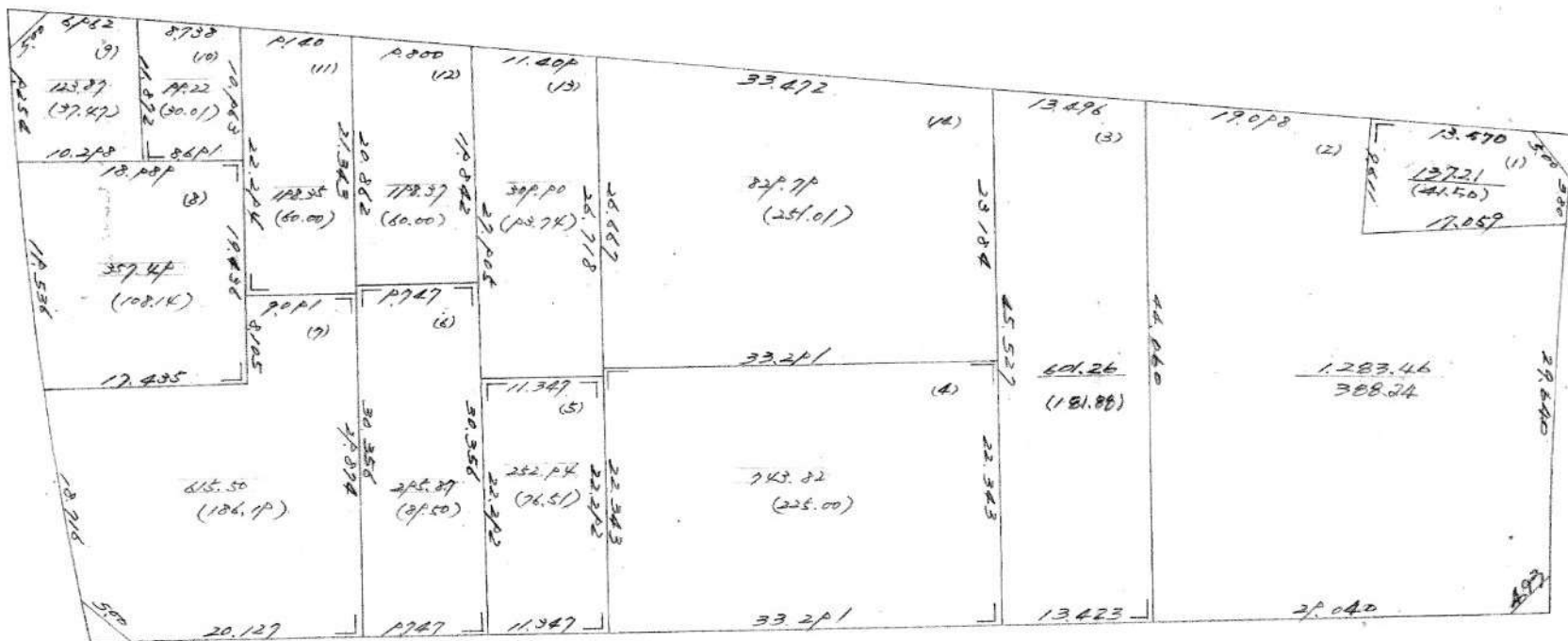
NO 57 北平 1/2 = JA28



Σ 3177.867 Σ 2113.860
 (961.771) (639.44)

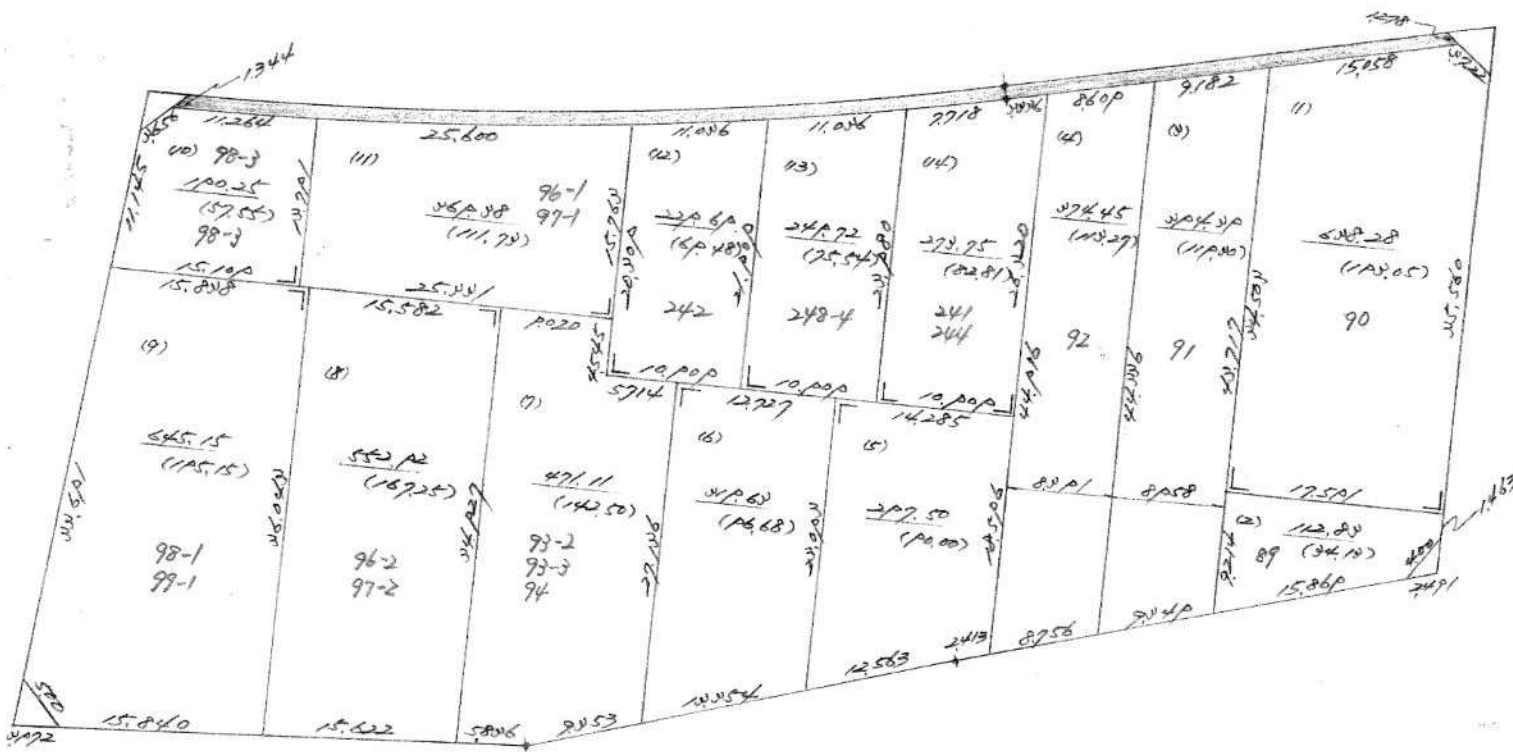
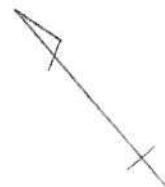
NO 58

北城管=月29



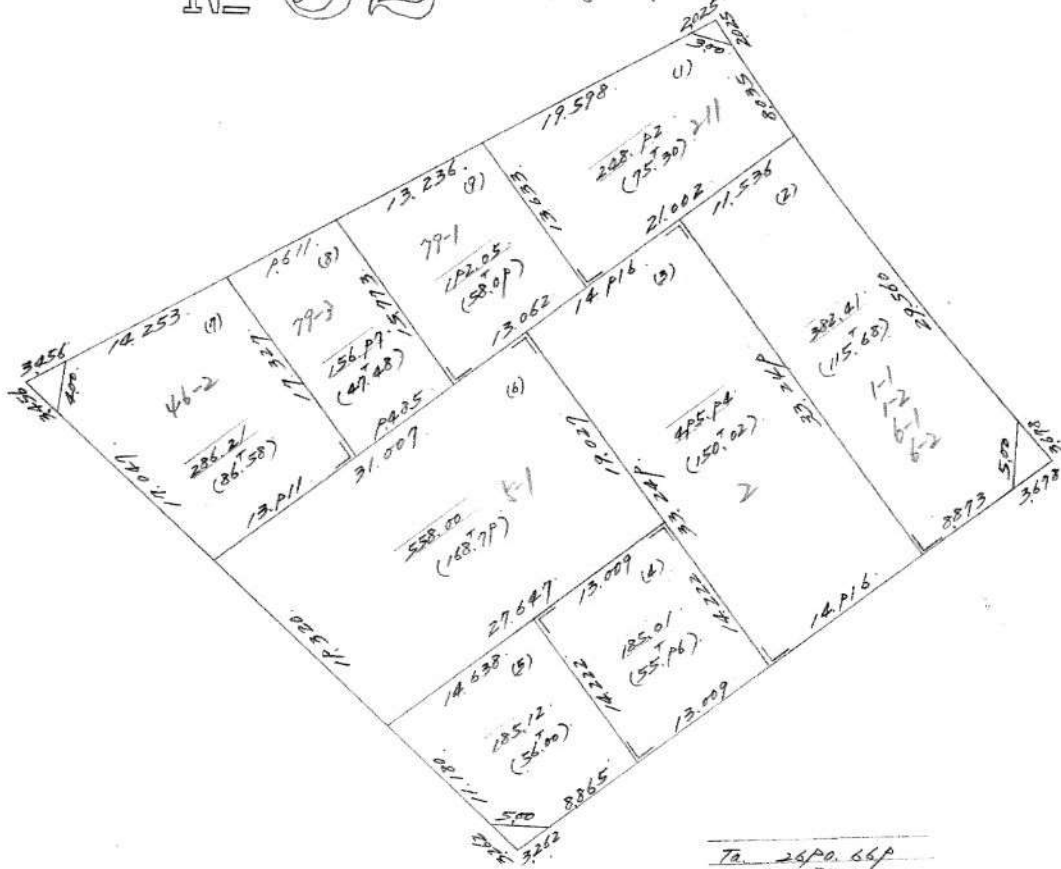
To 6047.05
(1829.19)

№53 北城台 = 月30



5.11 P. 11
15.48.747

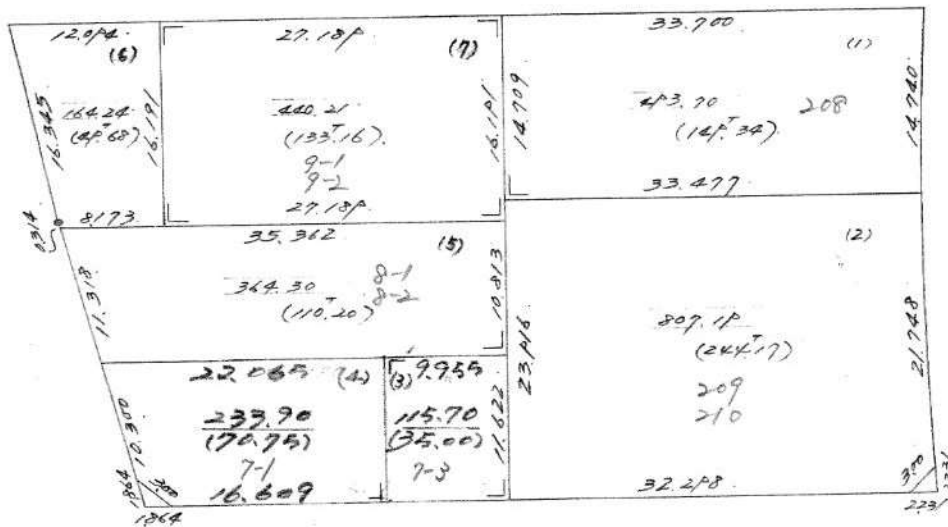
№ 52 北数台=目3



TA 2640.66P
(813790)

№ 51

北城台 = 1032



72 261.260
(792730)

北城區 = 田 34

35

36

33

37

№ 59. 60. 61. 62. 63

62. 2475.87^{m2}
(1748.72)

= 田 33 (62)

18) 14.076 207.38 (62.73) 14.244 10.865	19) 14.142 206.46 (62.45) 14.142 10.676	110) 18.745 272.45 (82.22) 212-27 18.745 16.108	111) 19.054 279.67 (84.60) 212-36 19.182 15.145	11) 19.120 279.06 (84.41) 212-35 19.254 15.181
7) 15.318 (46.33) 10.676	6) 15.316 (46.33) 10.676	5) 231.34 (69.88) 212-25 16.108	4) 230.71 (69.70) 212-26 16.000	3) 231.48 (70.02) 212-27 15.127
14.076	14.142	18.745	19.054	19.120

63. 1445.08^{m2}
(1228.64)

= 田 37 (63)

5) 16.457 277.40 (71.81) 16.211	6) 16.327 275.63 (71.28) 16.218	11) 15.563 229.58 (69.44) 16.054
4) 238.60 (72.17) 19.445	3) 238.61 (72.17) 16.011	2) 235.26 (71.17) 14.969
16.457	16.327	15.563

= 田 34 (59)

16) 14.314 213.04 (62.27) 8.000	7) 17.763 268.05 (81.08) 212-24 18.227	11) 15.564 252.53 (76.31) 212-19 17.182
5) 23.582 364.03 (110.12) 212-23 21.000	2) 20.727 310.98 (94.01) 212-20 20.445	1) 14.000 217.58 (65.22) 212-8 16.573
14) 16.745 343.53 (103.72) 212-32 18.404	3) 252.66 (75.58) 212-21 19.454	12) 14.000 217.58 (65.22) 212-8 16.573

= 田 35 (60)

16) 15.527 253.85 (76.79) 17.672	11) 15.600 229.18 (69.97) 212-13 17.227
5) 256.74 (77.66) 212-17 17.611	4) 234.17 (70.83) 212-14 18.127
14) 17.611 237.61 (71.87) 212-16 15.507	3) 248.06 (75.04) 212-15 16.727

= 田 36 (61)

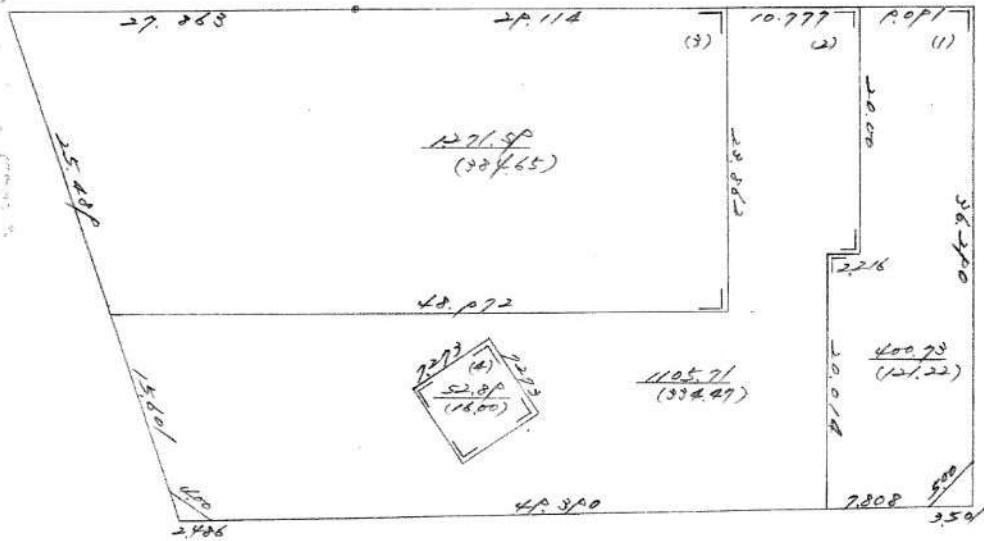
5) 14.218 264.85 (80.11) 16.382	6) 16.218 252.95 (76.45) 212-9 16.436	11) 14.000 217.58 (65.22) 212-8 16.573
14) 16.103 245.91 (73.98) 212-11 14.000	4) 242.70 (73.54) 212-10 16.718	12) 14.000 217.58 (65.22) 212-8 16.573

60. 1460.41^{m2}
(441.76)

61. 1614.17^{m2}
(408.27)

59. 2034.62^{m2}
(615.41)

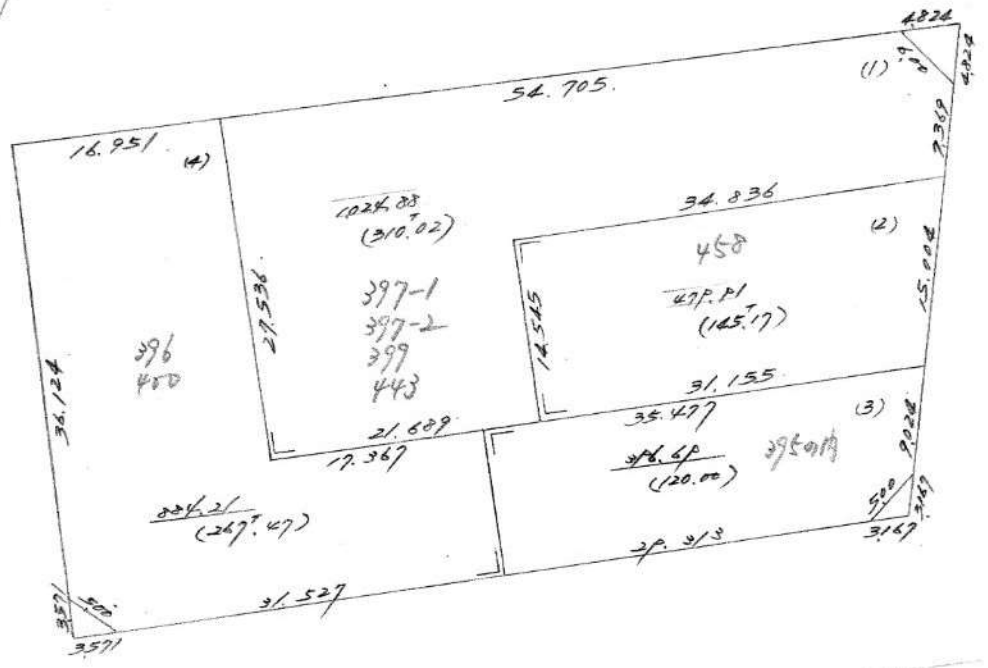
NO 73 北城台 = 田 39



$\frac{2030.196}{(356,357)}$



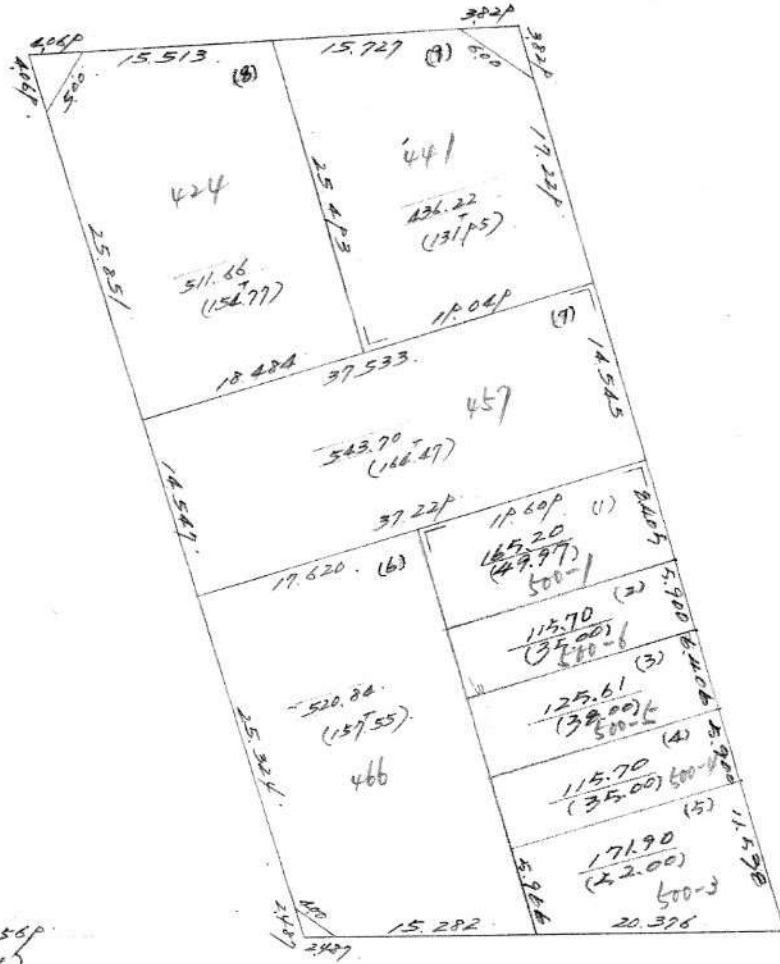
NO 74 比級管 月 40



Ta. 2985.706
(842.66)

NO 75

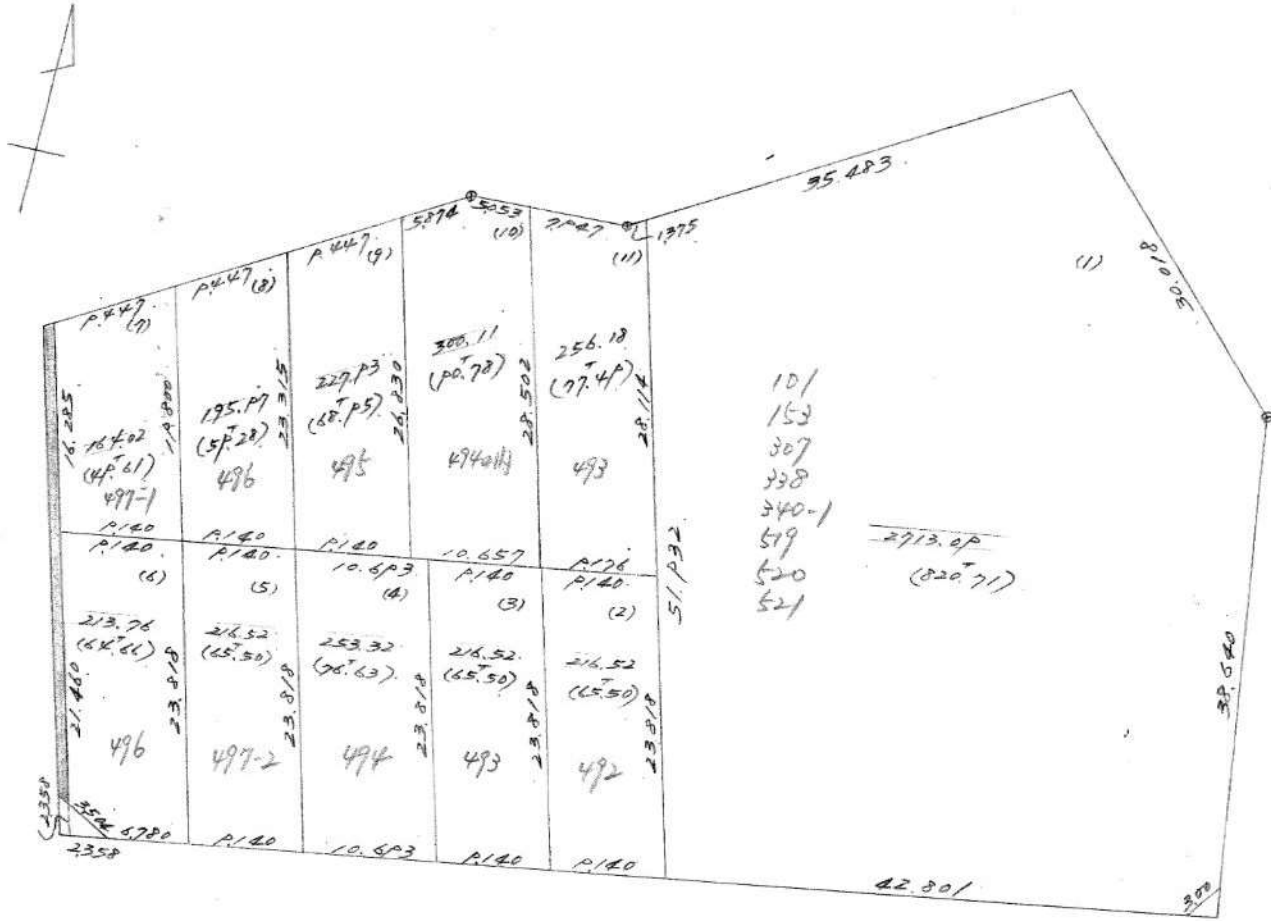
比城 41



Ta. 2706.56p
(818.77)

NO 76

比載台=月42



Te. 4974.014 * 37.024
(150461)