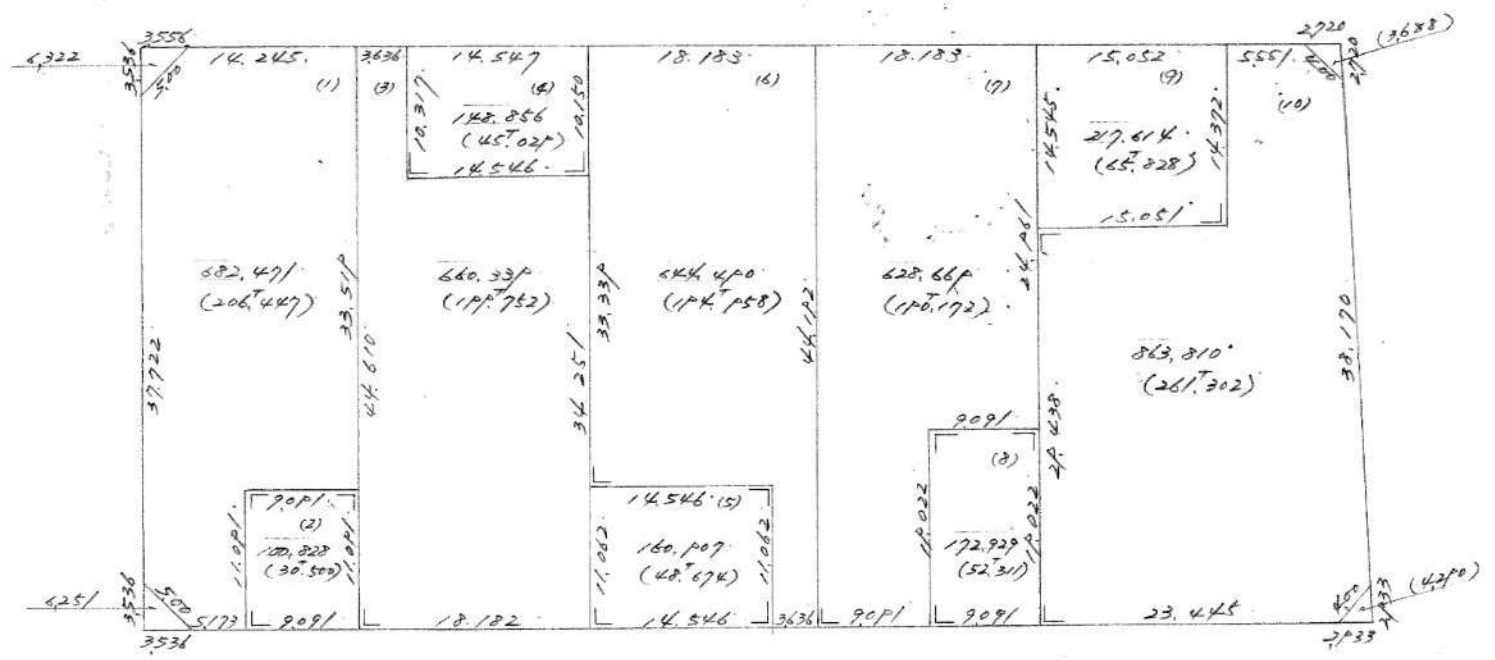




# № 117 北城后一街



4128<sup>27</sup>66  
12947973

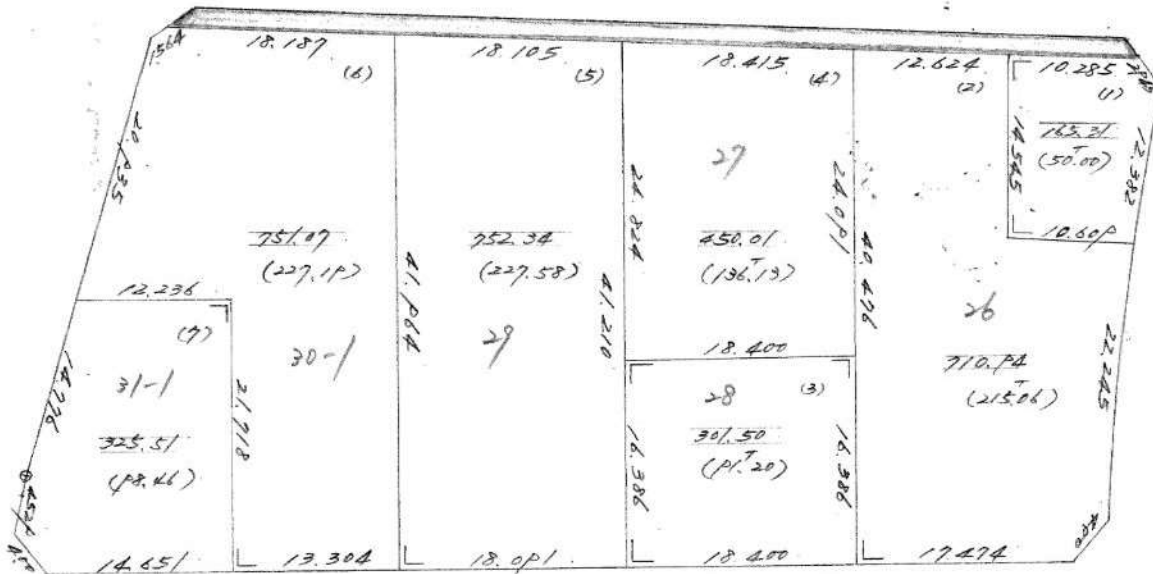
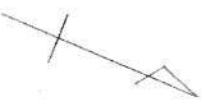
№ 116

№ 116-1A2



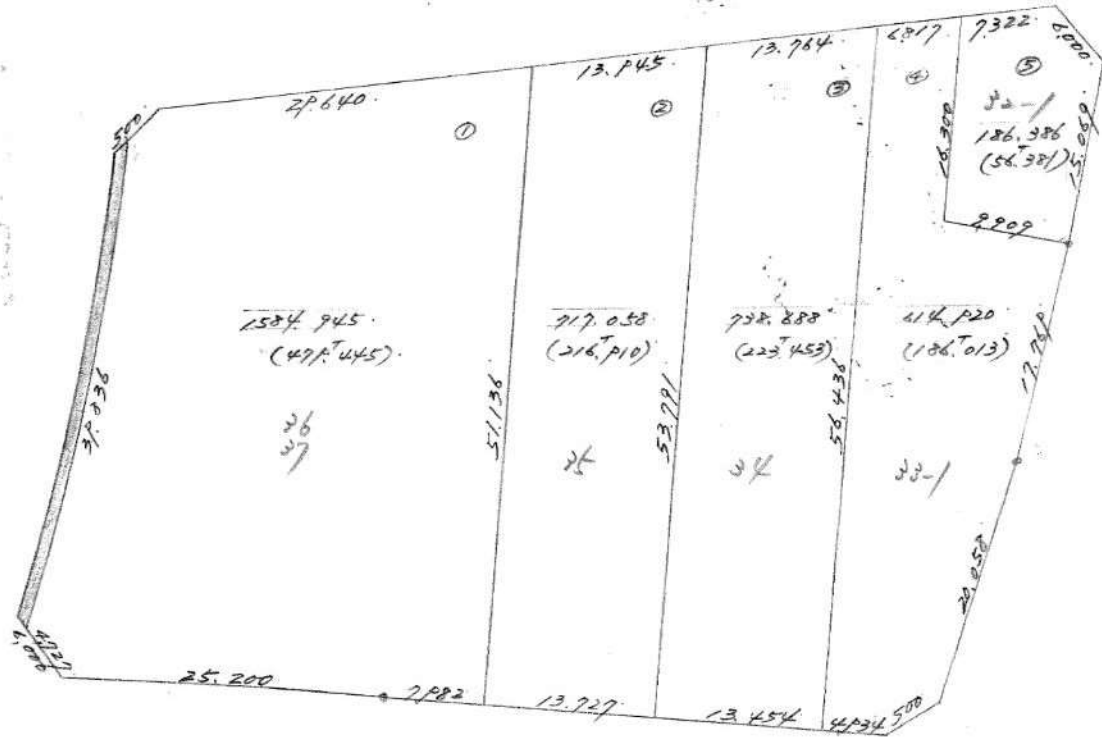
3623, p22  
(1096.235)

# NO 115 地籍图-1A3



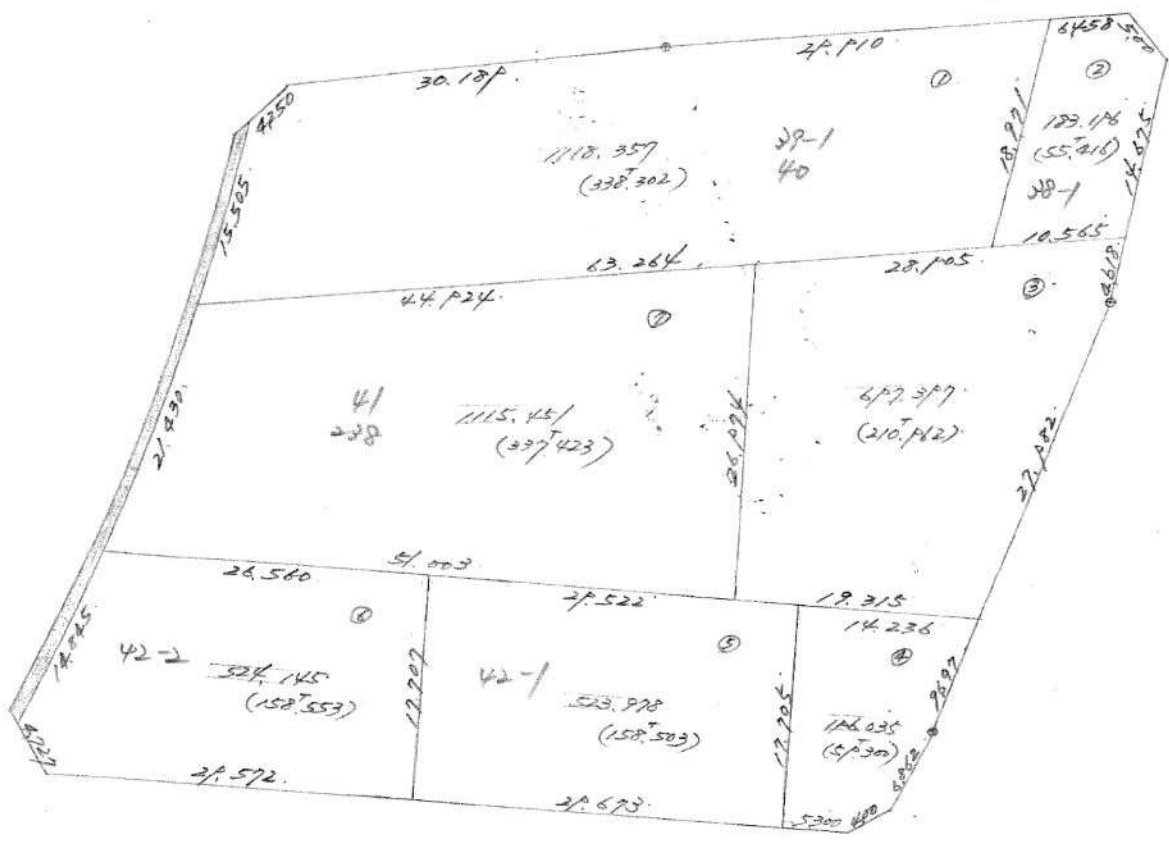
Ta. 3456.702 \* 33. 114.00p  
(1045362)

# № 114 北城岩-104



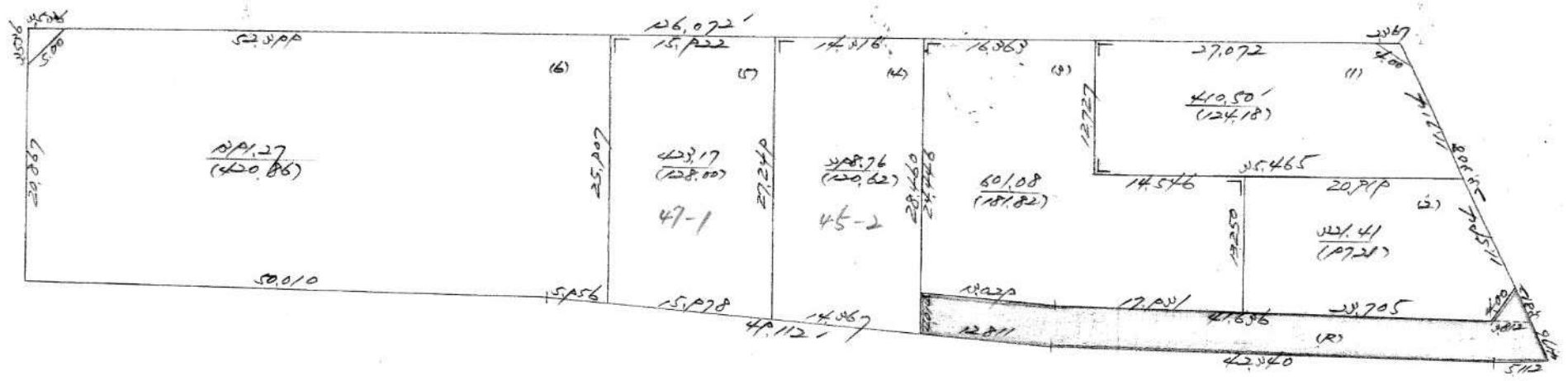
TA 384/997 K 38.710  
(1162202)

# No 113 北城宮-田舎



TA. 2350.557 (1318.457) 14.50.477

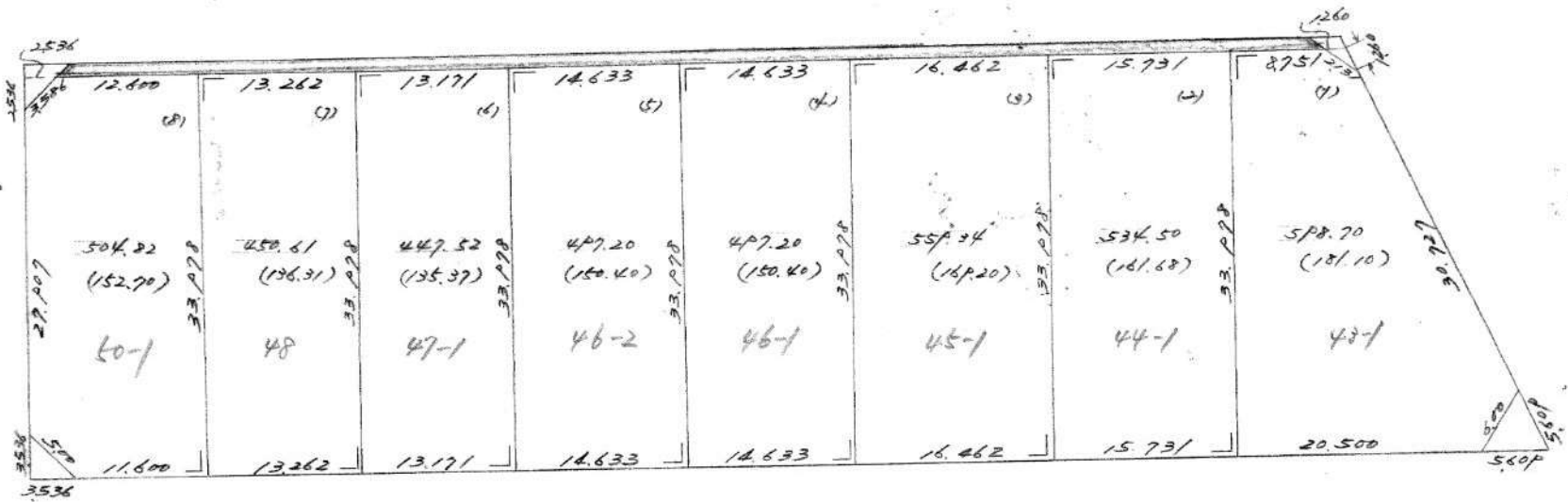
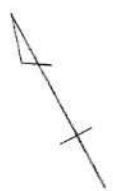
# № 112 北城管-JA6



$\frac{3,546,216}{(107,73)}$  R-243,523

# № 111

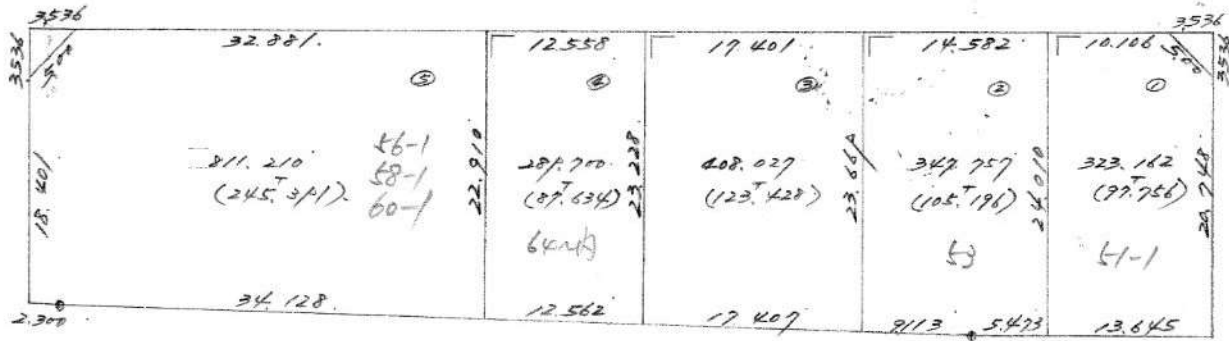
北城后-107



To 402f. p24 \* 107. p33  
(1337.16)

№ 109

北城管一自8

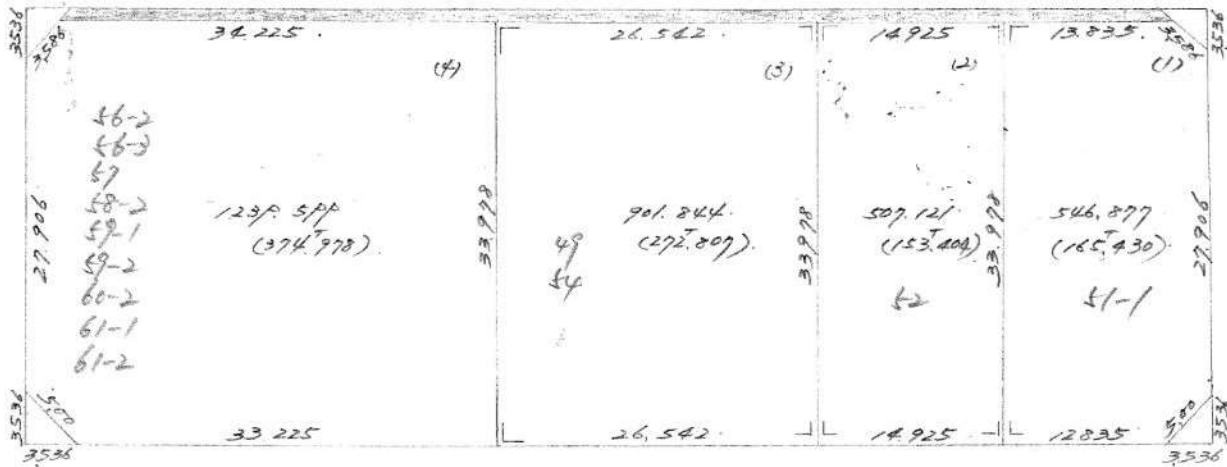


7A. 2/71.856  
(657.40)




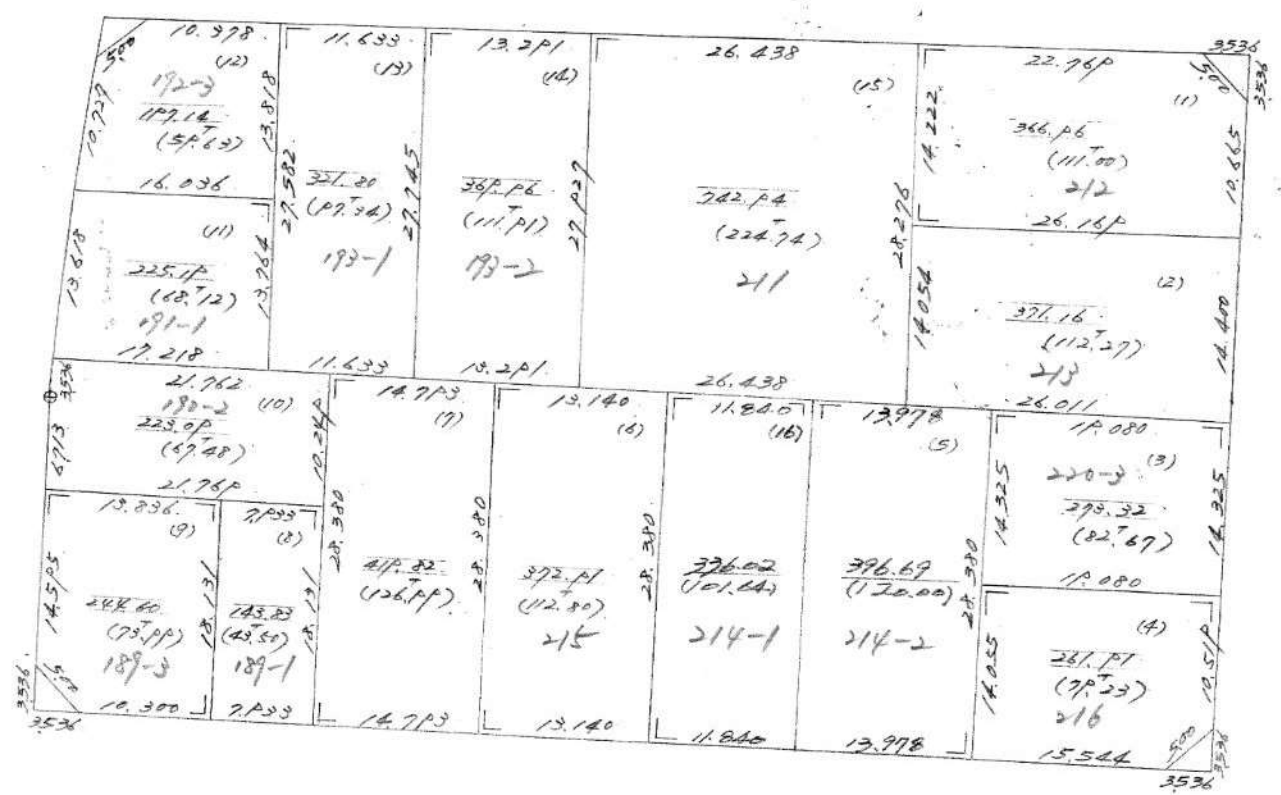
NO 110

北城后-109



TA. 3195,441  
(966,7619) \* 28,495


**NO 102** 北城管-1010

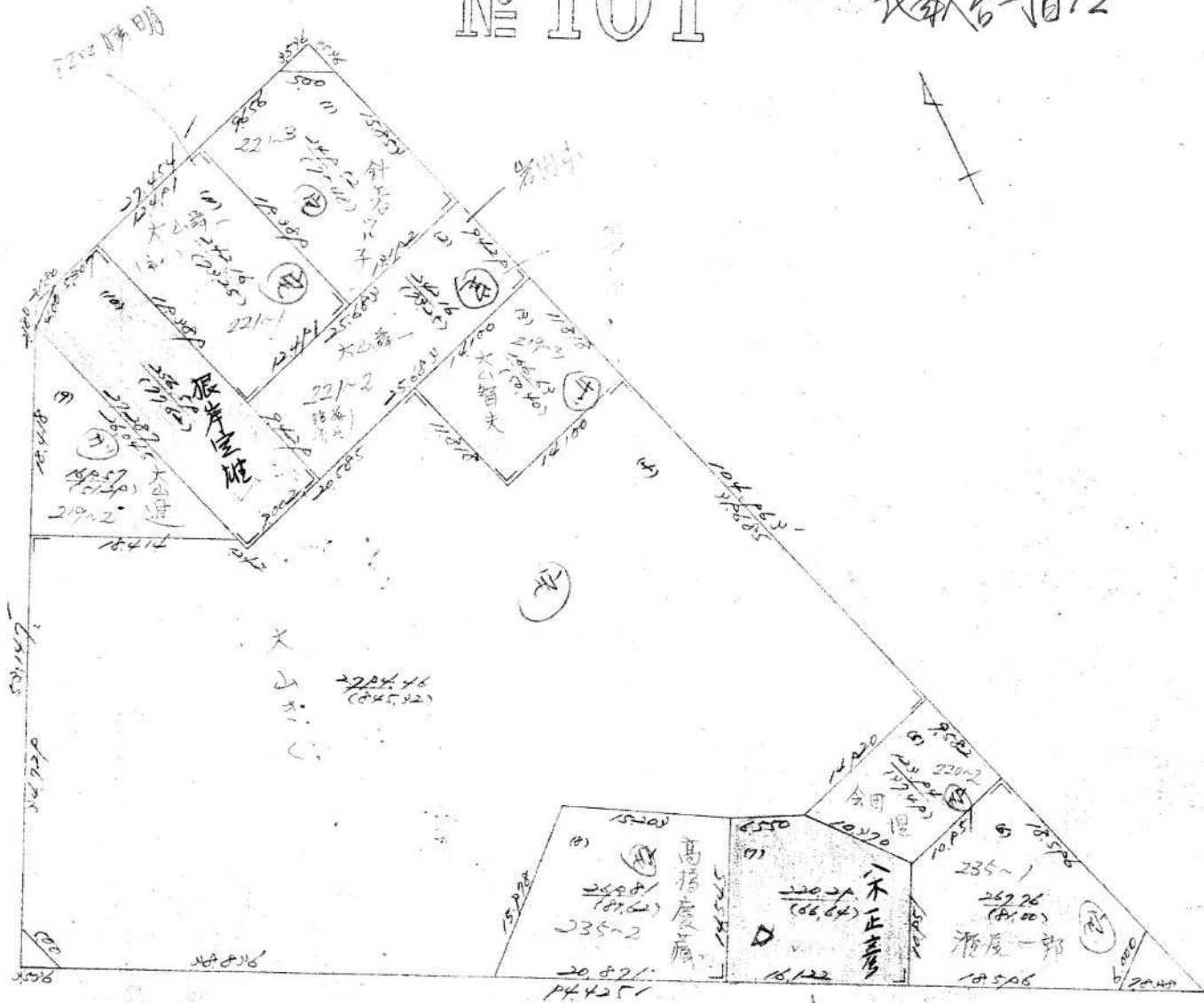


TA 5267, 427  
 (15937,31)



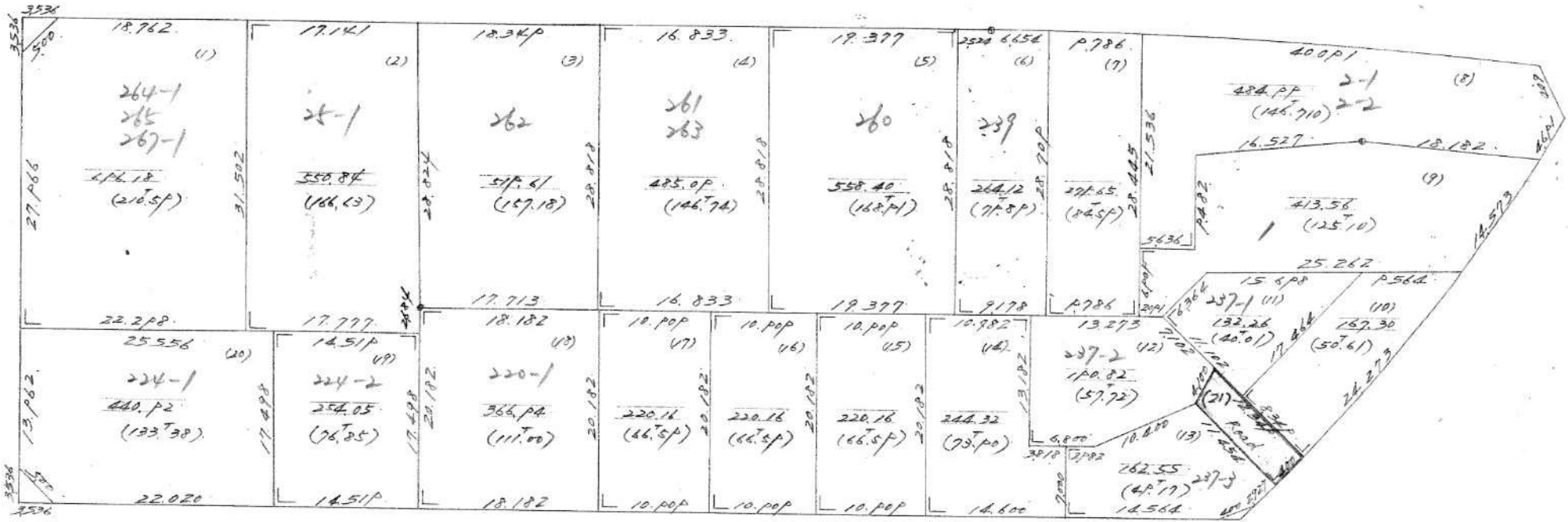
№ 101

北緯管-田12



502-141  
(1.0.38)

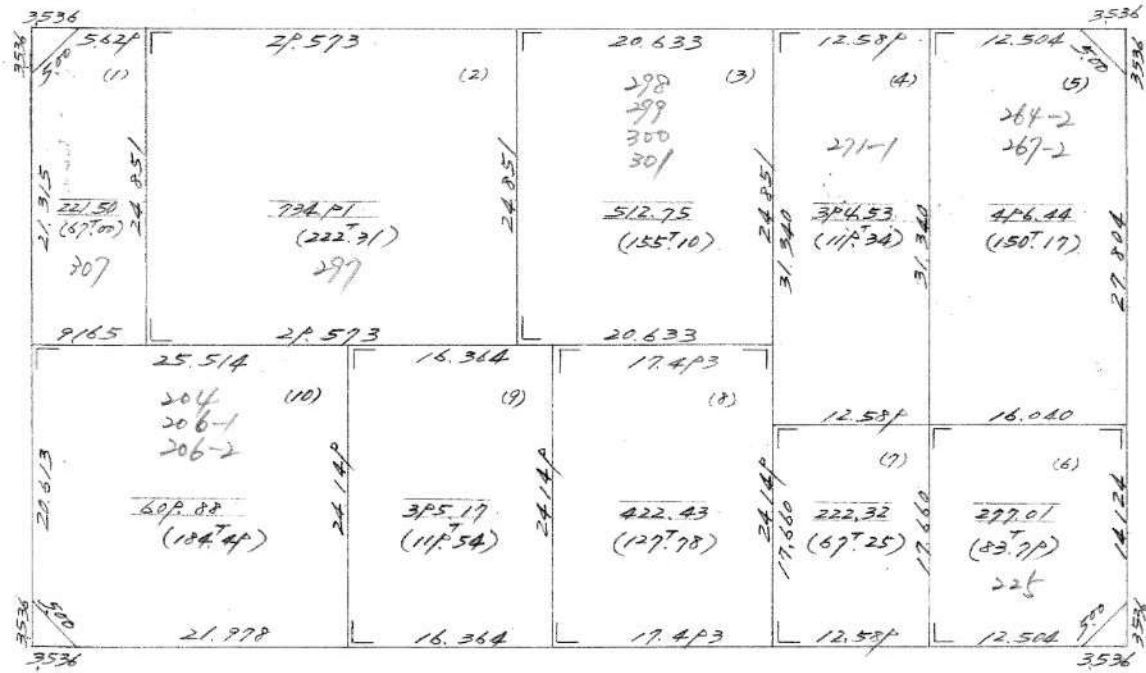
# № 100 改修計画



Ta. 6872.1PP Road 47.603  
(207875)



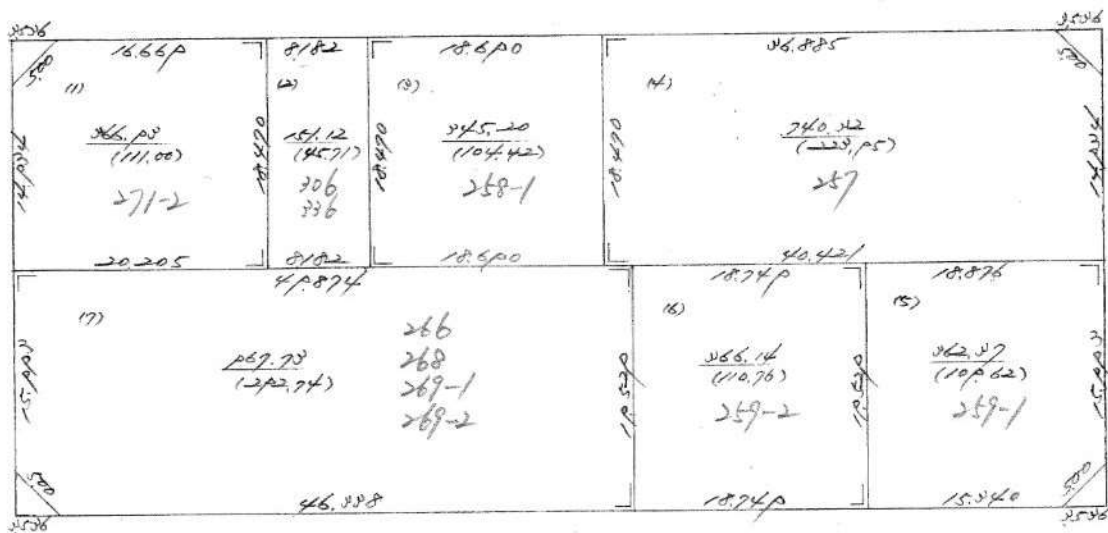
# No 99 北城官一田4



Ta 4286 pp / (1296.777)



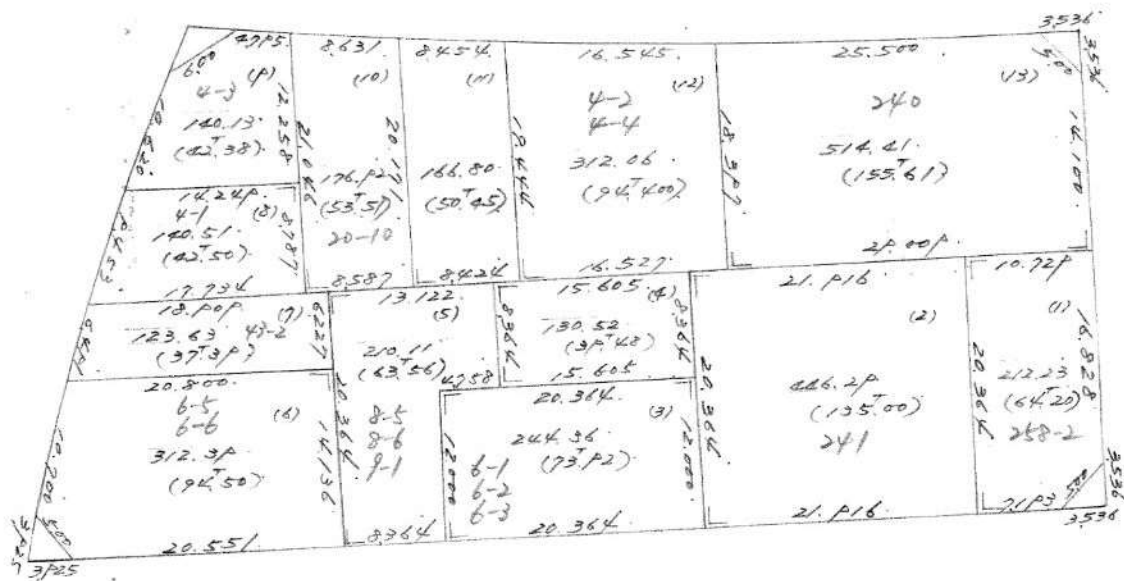
# № 95 北城宮-1016



$\frac{122.84}{(198.20)}$

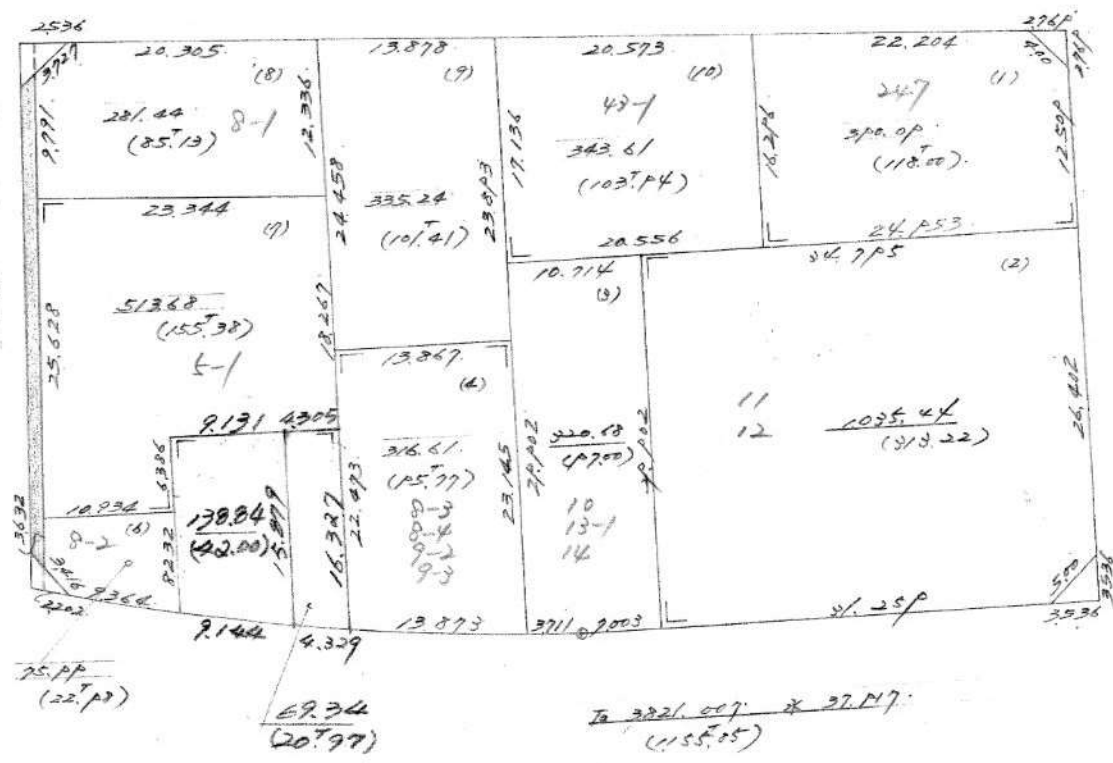


# № 94 地籍图-1月17

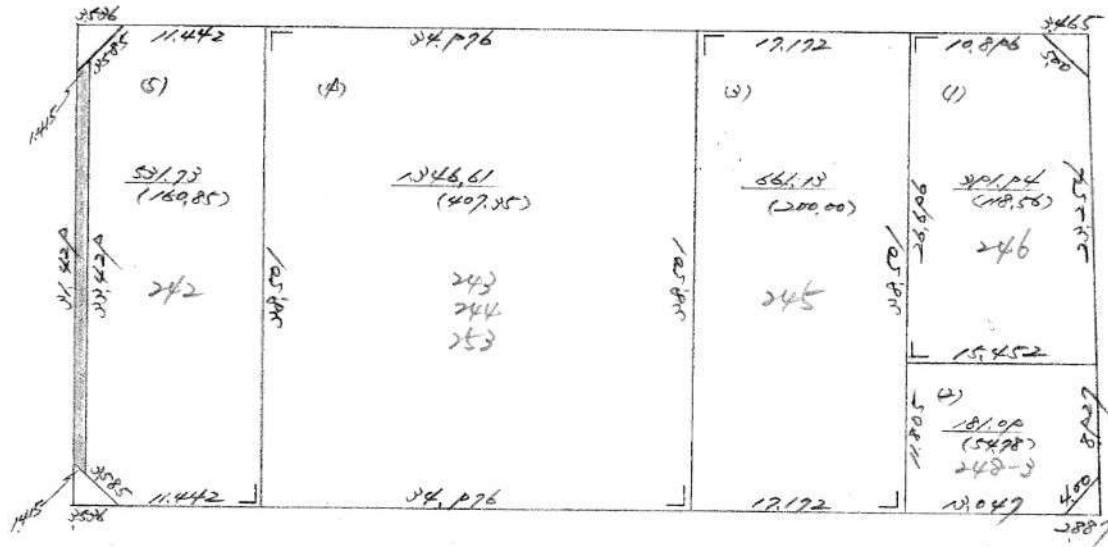


TA. 3130.433.  
(946.790)

# No 93 北城后-1018



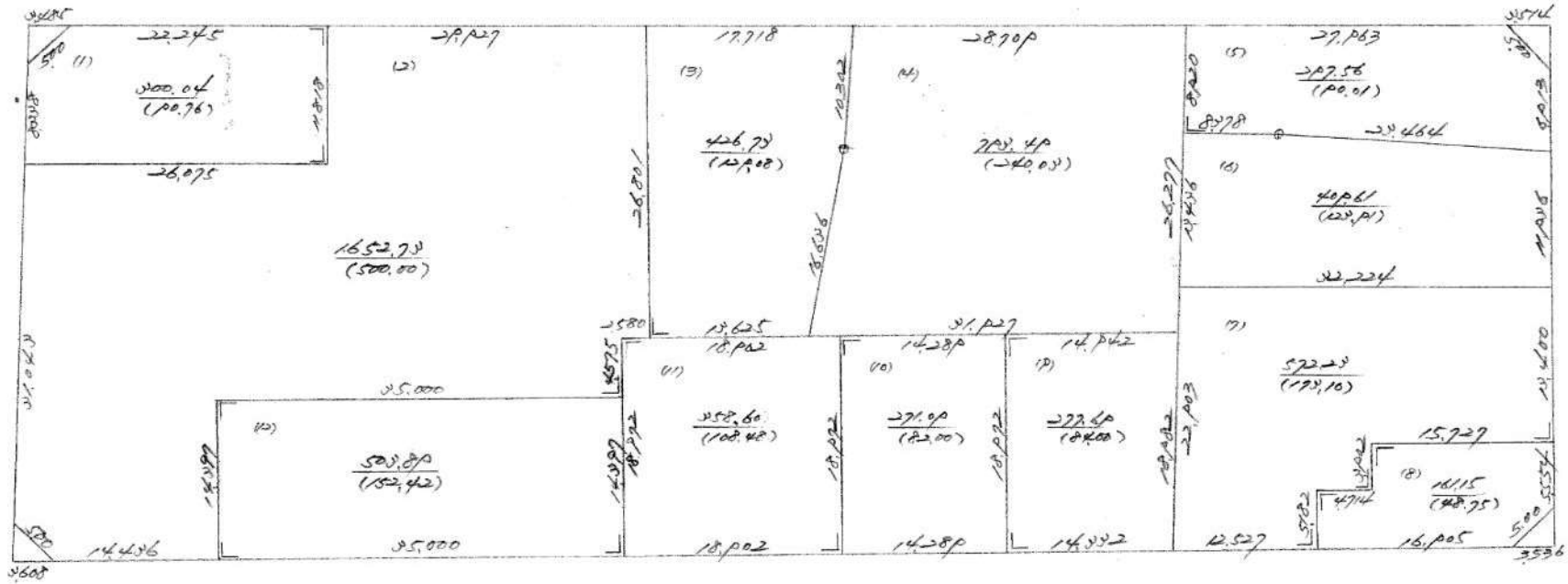

**№ 92** 比級管-月19



$\frac{3112.51}{(41.54)}$



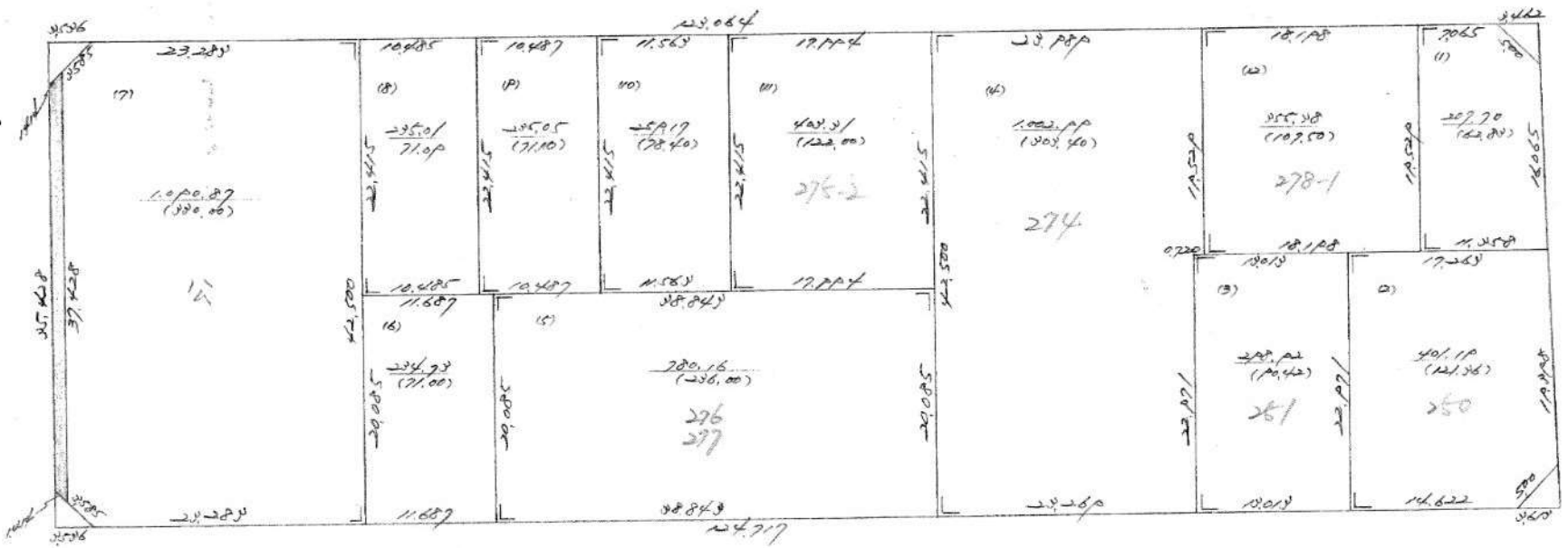
# No. 90 北城管一册二/





No 89

北城谷-田22



5507.53  
(1,665,710)



